

The Challenge Machinery Company provides owner's manuals on its products solely as a courtesy to its customers. See the information below before using this manual.

These manuals are for reference only. These manuals include products which are noncurrent, unsupported or no longer produced by The Challenge Machinery Company, and are provided solely as an accommodation to our customers. By providing these manuals, The Challenge Machinery Company makes no representation or warranty as to the products, their current condition, or their suitability or fitness for use in any particular application, which are the sole and independent responsibility of the product owner and user.

Older products may not comply with current safety procedures, guidelines or regulations, and it is the product owner's and user's responsibility to evaluate the suitability and fitness of the products in their current use and application. The Challenge Machinery Company makes no representation, warranty or recommendation regarding any modifications which may be required on non-current or unsupported products. The Challenge Machinery Company assumes no liability for any modification or alteration to any Challenge product, and any such modification or alteration to any Challenge product is not authorized by The Challenge Machinery Company. The availability of these manuals is solely for the purpose of providing reference information for the products.

This manual may not be complete in all aspects of product maintenance and repair. **All products should be used only by qualified and properly trained personnel, following proper safety procedures.** All products should be regularly inspected and maintained, and their condition, application and use should be periodically evaluated by qualified personnel. Only qualified and properly trained technicians should perform maintenance, repair and replacement procedures. Attempting these procedures without proper training may cause machine damage or operator injury!

Products may be unsupported by The Challenge Machinery Company due to age or the unavailability of parts from their original manufacturer. No parts or product support will be available to repair or maintain unsupported products. Older products may not be UL listed (if the product does not have a UL label it is not a listed product), and may not comply with applicable installation or other regulations or requirements if relocated to a new facility. Many municipalities require a product to be UL listed before an electrician will connect power to them. Often the cost of updating an older product to comply with current safety regulations is greater than the value of the product.



The Challenge Machinery Company
6125 Norton Center Drive
Norton Shores, MI 49441-6081 USA

ChallengeMachinery.com

iJOG

Instruction and Parts Manual

**Serial Numbers:
070031A through 149999A,
Build Date 2014 and up (no S/N)**

Sold and Serviced by

F.2-A
March 2024

1.0 Introduction

THIS MANUAL is designed to help you get the most from your Challenge equipment. Keep this manual in a safe, convenient place for quick reference by operators and service personnel.

! CAUTION SAFETY ALERT! This symbol means **CAUTION: Personal safety instructions!** Pay special attention to the instructions in bold type. Personal injury may result if the precautions are not read and followed.

READ THIS MANUAL BEFORE OPERATING! Follow precautions and instructions. If after reading the manual, questions remain; please contact your Authorized Challenge Dealer.

Take a few minutes right now to **RECORD YOUR MACHINE SERIAL NUMBER** in the space provided on the front cover of this manual. Also be sure to fill out the warranty card accompanying your machine and return it **DIRECTLY TO CHALLENGE**.

If you bought a used machine, it is important to have the following information on record at Challenge. Copy this page, fill in the information and send it care of The Challenge Service Department, 6125 Norton Center Drive, Norton Shores MI. 49441.

CHALLENGE MODEL iJOG	SERIAL NUMBER	
ATTN	COMPANY	
ADDRESS		
CITY	STATE/PROVINCE	ZIP
PHONE	DATE INSTALLED	
DEALER NAME & CITY		

*** WARRANTY INFORMATION ***

It is very important that you read and understand the conditions outlined in the *Warranty Information Sheet* attached to the outside of the shipping container of your machine.

The *Warranty Information Sheet* must be filled out completely and returned to THE CHALLENGE MACHINERY COMPANY in order for the warranty to be issued for this machine.

TABLE OF CONTENTS

1.0 Introduction	2
2.0 Safety	4
2.1 Precautions	4
2.2 Power Lockout Procedure	4
2.3 Warning Label Definitions	5
3.0 Packing List	7
4.0 Specifications	8
5.0 Installation & Setup	9
5.1 Inspecting Shipment	9
5.2 Uncrating	9
5.3 Cleaning	9
5.4 Power Hook-Up	9
5.5 Mounting to Adjustable Stand (Optional)	9
6.0 Operation	10
6.1 Power / Speed Selection Switch (all models)	10
6.2 Jogging (all models)	11
6.3 Air Jogging	11
6.3.1 Three Modes of Jogging	11
6.3.2 Air Flow Adjustment	11
6.3.3 Timer Adjustment	11
6.4 Operating Tips	11
7.0 Troubleshooting/Maintenance	12
7.1 Troubleshooting	12
7.2 Blower Brush Replacement	12
8.0 Parts List	13
8.1 Footprint	13
8.2 66000-2 Main Assembly- iJOG with Air Sht. 1	14
8.3 66000-2 Main Assembly- iJOG with Air Sht. 2	16
8.4 66000-2 Main Assembly- iJOG with Air Sht. 3	18
8.5 66000-2 Main Assembly- iJOG with Air Sht. 4	20
8.6 66000-2 Main Assembly- iJOG with Air Sht. 5	22
8.7 66000-2 Main Assembly- iJOG with Air Sht. 6, 230V Option Parts	24
8.8 66000-3 Main Assembly- iJOG without Air Sht. 1	26
8.9 66000-3 Main Assembly- iJOG without Air Sht. 2	28
8.10 66000-3 Main Assembly- iJOG without Air Sht. 3	30
8.11 66000-3 Main Assembly- iJOG without Air Sht. 4	32
8.12 66000-3 Main Assembly- iJOG without Air Sht. 5 (Aus)	34
9.0 Wiring and Schematics	36
9.1 E-3185 Rev. "A" Basic Machine Schematic- 120V	36
9.2 E-3180 Rev. "A" Interconnection Diagram with Air- 120V	37
9.3 E-3180-1 Rev. "A" Interconnection Diagram without Air- 120V	38
9.4 E-3189 Rev. "B" Basic Machine Schematic- 230V	39
9.5 E-3189 Rev. "A" Interconnection Diagram with Air- 230V	40
9.6 E-3189-1 Rev. "A" Interconnection Diagram without Air- 230V	41

2.0 Safety

2.1 Precautions

- Safe use of this machine is the responsibility of the operator. Use good judgment and common sense when working with and around this machine.
- Read and understand all instructions thoroughly before using the machine. If questions remain, contact the dealer from which you purchased this machine. Failure to understand the operating instructions may result in personal injury.
- **DO NOT ALTER SAFETY GUARDS OR DEVICES.** They are for your protection. Severe personal injury may result.
- **Disconnect power** before performing maintenance. See Section 2.2 Power Lockout Procedure.
- Observe all caution labels on this machine.
- Be sure there is sufficient power to operate the jogger properly.
- If the jogger sounds or operates unusually, have it checked by a qualified service person.

2.2 Power Lockout Procedure

For maximum safety while making adjustments or repairs to your machine, be sure to disconnect power to the machine. Disconnect the power plug from its socket.

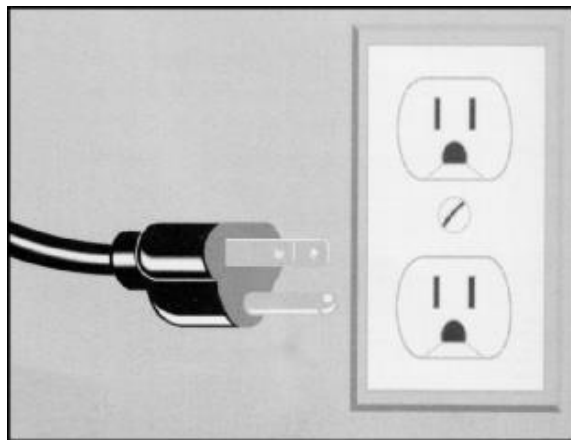


Figure 1 - Main Power Disconnect

2.3 Warning Label Definitions

The following warning labels are found at various locations on your machine. Read and understand the meaning of each symbol. If a label is lost from the machine, it should be replaced.



HAZARDOUS AREA

Disconnect power before cleaning, servicing, or making adjustments not requiring power. Do not alter safety guards or devices; they are for your protection. Replace all guards. Do not operate with any guards removed.



SHOCK HAZARD

Disconnect power before removing cover. Replace cover before operation.

!OJO!



This Este simbolo de alerta de seguridad significa ¡ OJO ! - INSTRUCCIONES DE SEGURIDAD PERSONAL. Lea las instrucciones porque se refieren a su seguridad personal. Fall de obedecer las instrucciones que siguen podria resultar en lesiones corporales.

- Esta maquina, junto con sus mecanismos de seguridad, esta disenada para ser manejada por
- **UNA SOLA PERSONA** a la vez. Jamas debe ser manejada por mas de una persona al mismo tiempo.
- La seguridad es la responsabilidad del operario que usa esta maquina.
- **LEA DETENIDAMENTE** el manual de instrucciones y las **PRECAUCIONES DE SEGURIDAD** antes de poner a funcionar la cortadora. Pidale a su supervisor una copia.
- El manejo de la guillotina debe estar exclusivamente a cargo de personal entrenado y autorizado para ello.
- **NO MODIFIQUE LOS MECANISMOS DE SEGURIDAD**, estan ahi para su proteccion no deben ni modificarse ni quitarse.
- **DESCONECTE LA CORRIENTE ELECTRICA** antes de proceder a hacerle servicio de limpieza, engrasar, o de hacer ajustes que no requieren corriente. Trabe el interruptor en la posicion **OFF** (apagado); vea "Procedimiento para cortar la corriente electrica" al pie de esta pagina.
- Eche llave a la guillotina y quite la llave cuando la maquina no esta en operacion; vea "Corriente electrica".
- Asegurese de que la guillotina este debidamente a tierra. Vea "Conexion de la fuerza electrica".
- Verifique el voltaje y asegurese de que este sea suficiente para el debido funcionamiento de la guillotina.
- Preste atencion a todas las placas con advertencias instaladas en esta guillotina.
- No permita que objetos estranos esten en la mesa o cerca de la cuchilla cortadora.
- **TENGA SUMO CUIDADO** al tocar y cambiar la cuchilla. Heridas severas y hasta desmembramiento pueden resultar del manejo sin cuidado o negligente.
- El suelo alrededor de la guillotina debe mantenerse despejado y libre de recortes, desperdicios, aceite y grasa.
- Al haber la necesidad de reemplazar partes hidraulicas, afloje todas las conexiones poco a poco para dejar escapar la presion. Jamas debe aflojarse conexiones mientras la maquina este andando.
- Si la guillotina empezara a sonar o trabajar diferentemente a lo acostumbrado, desconectela y consulte la seccion "Troubleshooting" (Reparador) de este manual. Si no es posible corregir el problema, llame a su servicio autorizado para que le examinen la maquina.
- **PELIGRO DE MACHUQUE** - Mantenga manos y dedos fuera de la agarradera mientras sujeta el papel. Use el calibrador trasero y su rueda de mano para empujar el papel cortado. **NO PONGA SUS MANOS BAJOLA CUCHILLA O AREA DE LA AGARRADERA.**
- **NO OPERE SIN LAS GUARDAS PROTECTORAS!**

¡ OJO ! PRECAUCION - Como proceder para desconectar la corriente electrica.

Para maxima seguridad durante ajustes y reparaciones de su maquina, verifique bien que el interruptor principal de control de corriente al cual la maquina esta conectada, este desconectado. El interruptor deba ser puesto en la posicion "OFF" (desconectado) y se debe poner un candado en la anilla. La llave del candado debe ser guardada por la persona que estara efectuando los trabajos de servicio o de reparacion en la guillotina.

Desconecte la corriente electrica antes de proceder a hacer cualquier ajuste o reparacion o de efectuar el engrase en cualquier maquina.

3.0 Packing List



Part No.	Description	Qty.
iJOG	Paper Jogger	1

Optional Items

Part No.	Description	Qty.
A-6822-1	Heavy Duty Stand	1

4.0 Specifications

Description	Inch Units	Metric Units
Air Assist Version		
Paper Sizes	13" x 19" x 4"	330 x 483 x 101 mm
Runs with air always on		
Runs with air off		
Runs in air timer mode		
Low and high jog settings		
Footswitch operated		
Adjustable air flow		
Will jog collated sets		
120V, 60HZ, 15 Amp		
<i>Dimensions</i>		
Overall Height	21"	53 cm
Overall Width	23"	58 cm
Overall Depth	20"	51 cm
Overall Height w/Optional Stand	48"	122 cm
Net Weight	75 lb.	34 kg
Non-Air Assist Version		
Paper Sizes	13" x 19" x 4"	330 x 483 x 101 mm
Low and high jog settings		
Footswitch operated		
Will jog collated sets		
120V, 60HZ, 5 Amp		
<i>Dimensions</i>		
Overall Height	21"	53 cm
Overall Width	22"	56 cm
Overall Depth	17"	43 cm
Overall Height w/Optional Stand	48"	122 cm
Net Weight	70 lb.	32 kg
Sound Emission		
93 dB without air, 88 db with air (ear protection recommended)		

Challenge reserves the right to make changes to any product or specification without notice and without incurring responsibility to existing units.

5.0 Installation & Setup

5.1 Inspecting Shipment

This machine has been carefully packed to prevent damage during shipment. However, claims for damage or loss are the responsibility of the recipient. Inspect all shipments as soon as they are received. If there is any noticeable damage, note it on the freight bill. Visual and/or hidden damage must be reported to the claims department of the carrier within 15 days. Contact your dealer if you need any assistance. Check the contents of the box against the packing list on page 7. Make sure there are no missing items.

5.2 Uncrating

The iJOG weighs approximately 70 lbs (26 kg). DO NOT risk personal injury or damage by attempting to move machinery with makeshift equipment or inadequate help. This machine is shipped in a corrugated carton. Open the lid and remove the fillers. Carefully lift machine out of the carton and set on a work surface or optional stand (see section 5.5 Mounting to Adjustable Stand).

5.3 Cleaning

After unpacking, wipe down all machine panels and surfaces with a clean cloth.

5.4 Power Hook-Up

⚠ CAUTION **SHOCK HAZARD!** Possible shock could cause personal injury or death. Connect the plug to any standard 120 Volt outlet.

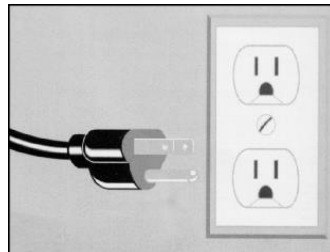


Figure 2 – Power Hook-Up

5.5 Mounting to Adjustable Stand (Optional)

Remove the stand and casters from their box. Assemble the casters to the stand using a $\frac{3}{4}$ " wrench. Assemble the tube and adjust it to your preferred height. Lock it in place using the two $\frac{1}{2}$ -13 bolts ($\frac{3}{4}$ " wrench) and $\frac{1}{2}$ " lock washers provided.

Using at least two people, place the machine on the stand. Line up four holes in the top shelf of the stand with four holes on the underside of the machine base. Fasten the machine to the stand using four $\frac{5}{16}$ -18 screws ($\frac{1}{2}$ " wrench) provided with the stand.

6.0 Operation

! CAUTION

IMPORTANT: DO NOT ATTEMPT TO OPERATE THE JOGGER UNTIL YOU HAVE THOROUGHLY READ AND UNDERSTAND ALL OF THE FOLLOWING INSTRUCTIONS. CALL YOUR AUTHORIZED CHALLENGE DEALER IF YOU STILL HAVE ANY QUESTIONS.

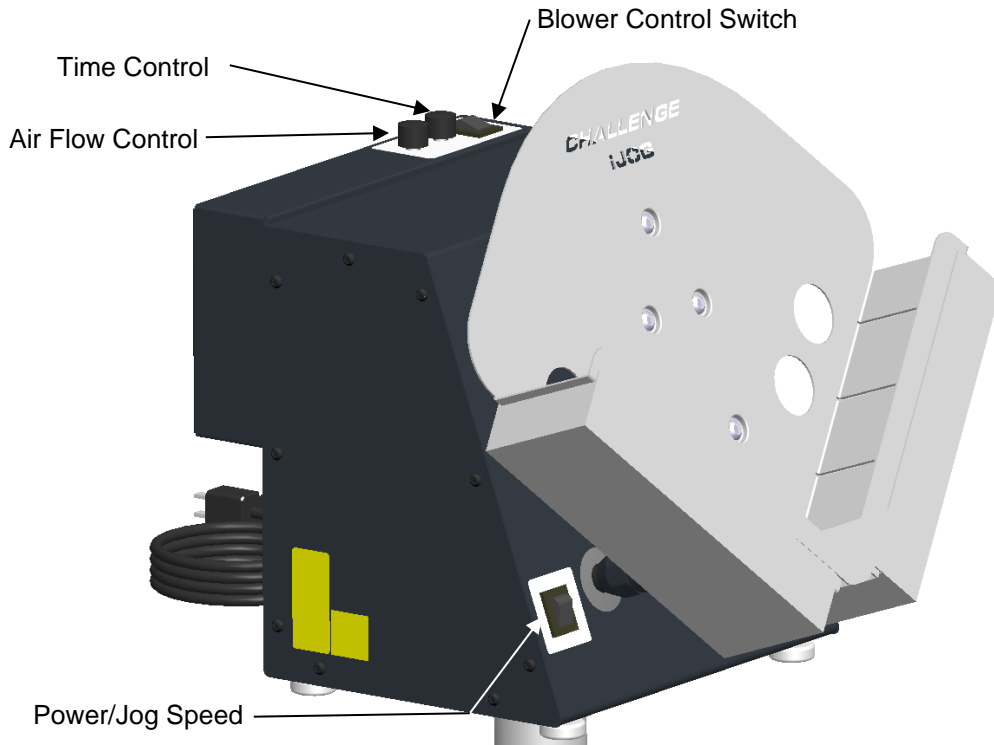


Figure 3 – Machine Controls

6.1 Power / Speed Selection Switch (all models)

The power/speed selection switch is located at the lower left-hand corner of the machine. Power is off when the switch is in its center position. Press the switch to the down position to set the jogger to its lower speed. Press the switch to the up position to set the jogger to its higher speed. Note that the machine always has power unless the switch is set to the center position. Set it as follows:

Mode	Switch Position
Higher Speed	Up
Off	Center
Lower Speed	Down

Tip! The lower speed setting is recommended for most applications.

6.2 Jogging (all models)

Be aware that the nature of jogging paper is loud. Select a jogging speed. Place a paper pile into the jogging tray. Depress the foot switch. Gently tamp the edges of the pile until the pile is adequately jogged. Release the foot switch and continue tamping until the motor stops. Remove the pile.

6.3 Air Jogging

The following section describes the operation of air assist model of the iJOG.

6.3.1 Three Modes of Jogging

The air assist feature can be set to three different modes: air on all the time the foot switch is depressed, air on for an adjustable period of the time the foot switch is being depressed, and air off. The Blower control switch is located at the right rear corner of the machine. Set it as follows:

Mode	Switch Position
Timer Mode	Up
Always On	Center
Off	Down

6.3.2 Air Flow Adjustment

The amount of airflow can be set from zero to maximum. The air flow adjustment knob is located next to the Blower switch. Turning the knob counter-clockwise decreases the air flow. Turning it clockwise increases air flow.

A medium to low setting is recommended for most applications.

6.3.3 Timer Adjustment

The amount of time the blower runs while the foot switch is depressed can be adjusted to a maximum of approximately 10-12 seconds. Turning the knob counter-clockwise decreases the time while turning it clockwise increases the time.

A medium to low setting is recommended for most applications.

6.4 Operating Tips

- Ear protection is recommended if operating for extended periods of time.
- If the machine is placed on a bench, a lip should be added to the edge of the bench to prevent the machine from sliding off.
- The rubber feet should be kept clean to prevent the machine from sliding.
- Medium to low settings are recommended for most applications and will extend the life of the machine.

7.0 Troubleshooting/Maintenance

7.1 Troubleshooting

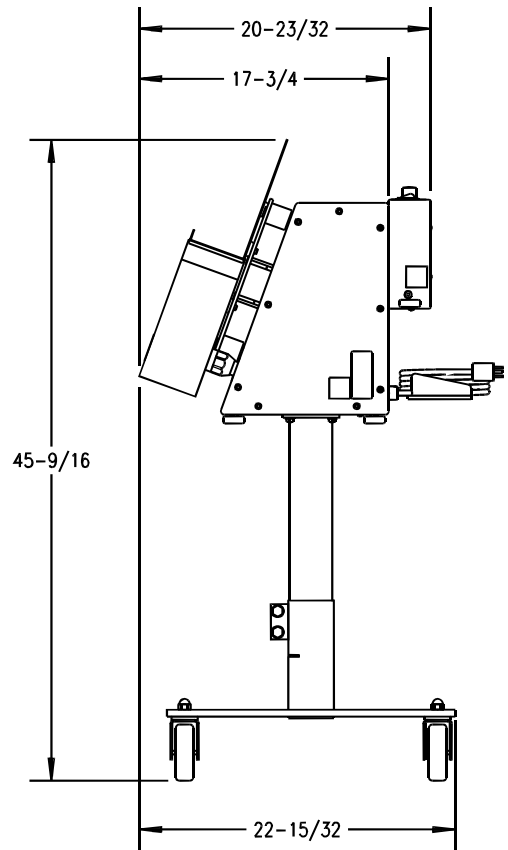
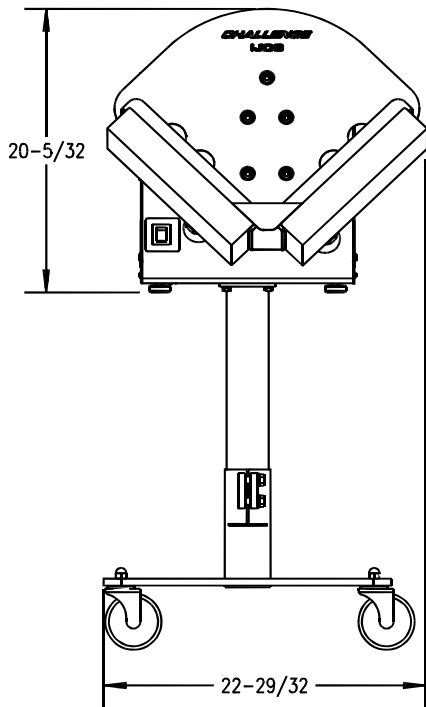
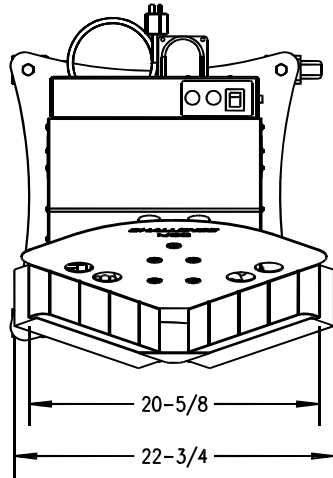
Problem	Possible Cause
Motor(s) won't turn on	Power switch turned off, unplugged, blown fuse, circuit breaker tripped, brushes worn, loose wires
Jogger runs but blower won't	Blower switched off, blown fuse, brushes worn, control circuit board damaged, loose wires
Jogger motor runs but won't jog	Eccentric weight on motor loosened

7.2 Blower Brush Replacement

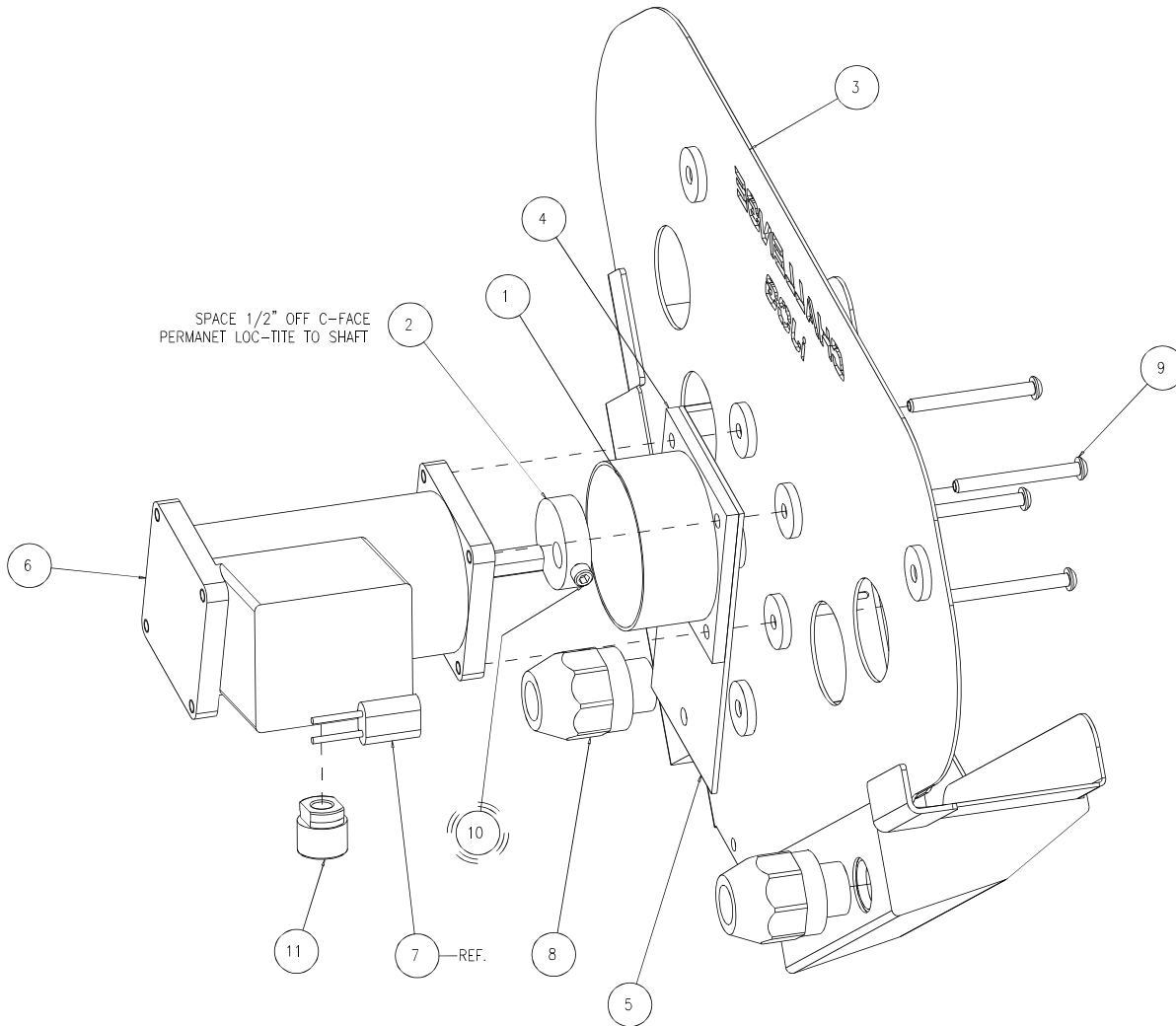
1. Switch the machine off and disconnect the power cord.
2. Remove one side cover from the machine.
3. To remove the switch box from the machine, remove (4) screws that attach it to the back side of the machine.
4. Rock back and forth while pulling on each of the (2) green terminal plugs to disconnect them from the circuit board.
5. Each brush assembly is held in place with by a bracket that is held down with (2) screws. Remove the brackets by removing the screws.
6. **DO NOT CUT OR UN-CRIMP THE WIRES FROM THE BRUSH ASSEMBLY.** Each wire is attached to a thin strip of metal that is inserted into the brush assembly.
7. Using a small screwdriver, pry between the wire and the casing to remove the strip of metal attached to the wire.
8. The first half of the strip will slide out easily. It will lock when it is half-way out. Use a thin screwdriver to push down the locking tab that is on the strip of metal. Pull the strip of metal while pushing the locking tab.
9. Install the new brush assembly in the reverse order of which the old one was removed. Always replace both brushes at the same time.
10. Firmly re-insert the (2) green terminal plugs into the circuit board.
11. Reinstall the switch box to the back of the machine.
12. Reinstall the side cover.
13. Reconnect the power cord.

8.0 Parts List

8.1 Footprint



8.2 66000-2 Main Assembly- iJOG with Air Sht. 1

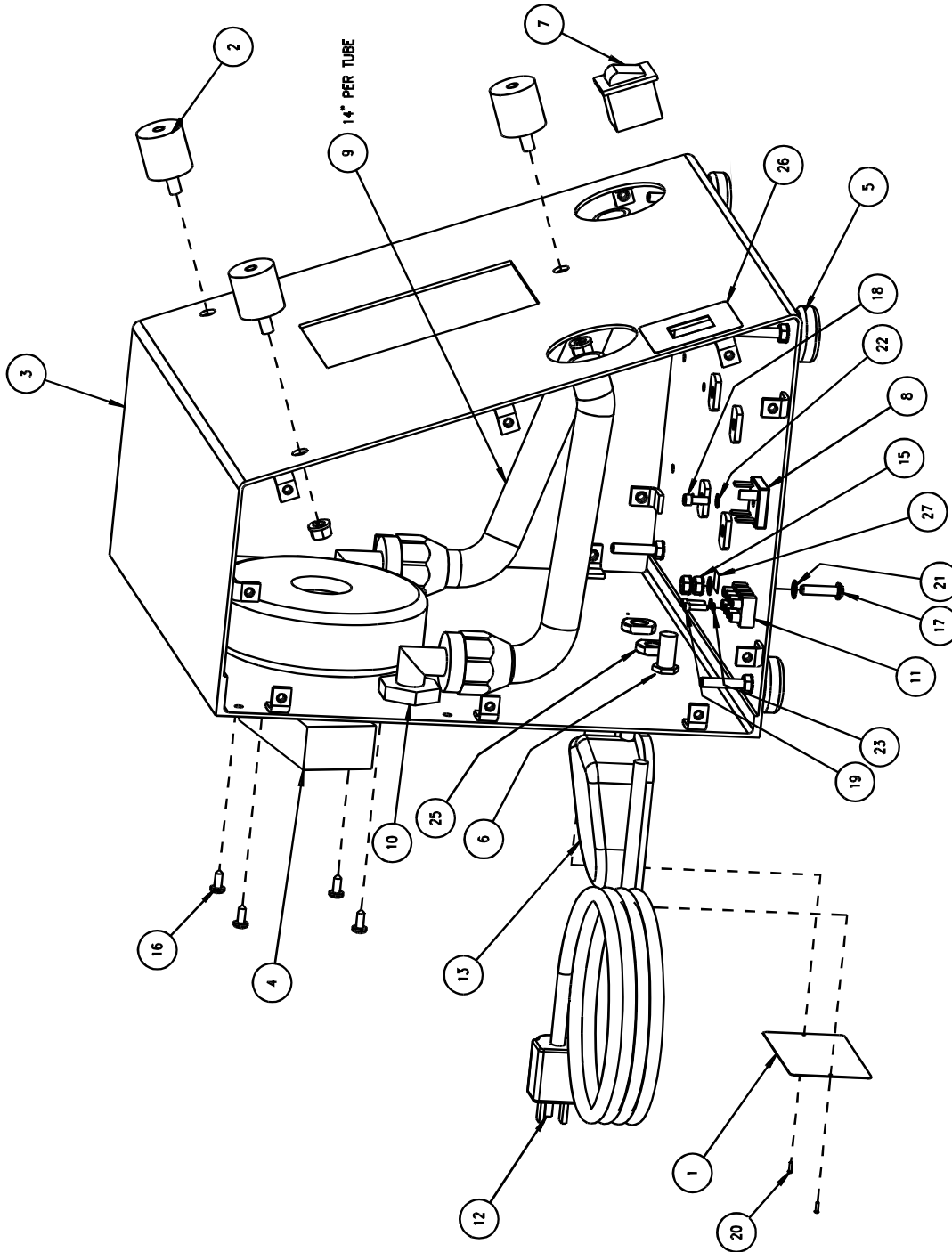


Main Assembly- iJOG with Air

66000-2 Sht. 1

ITEM	PART NO.	DESCRIPTION	QTY
1	66004-1	TUBE 1	
2	66005-1	ECCENTRIC WEIGHT	1
3	66011-1	JOGGING TRAY	1
4	66024	REINFORCEMENT PLATE	1
5	66025	REINFORCEMENT PLATE	1
6	E-1600-201	3500 RPM DC MOTOR	1
7	E-1736-2	QUENCHARC	1
8	E-2191-2	3/4 CONDUIT FITTING	2
9	H-6910-420SS	SCREW - 1/4-20 X 2-1/2 BUT. HEAD CAP STAINLESS	4
10	H-6918-403	SCREW - 1/4-20 X 3/8 SOCKET HEAD CAP	1
11	S-1350-16	STRAIN RELIEF BUSHING	1

8.3 66000-2 Main Assembly- iJOG with Air Sht. 2

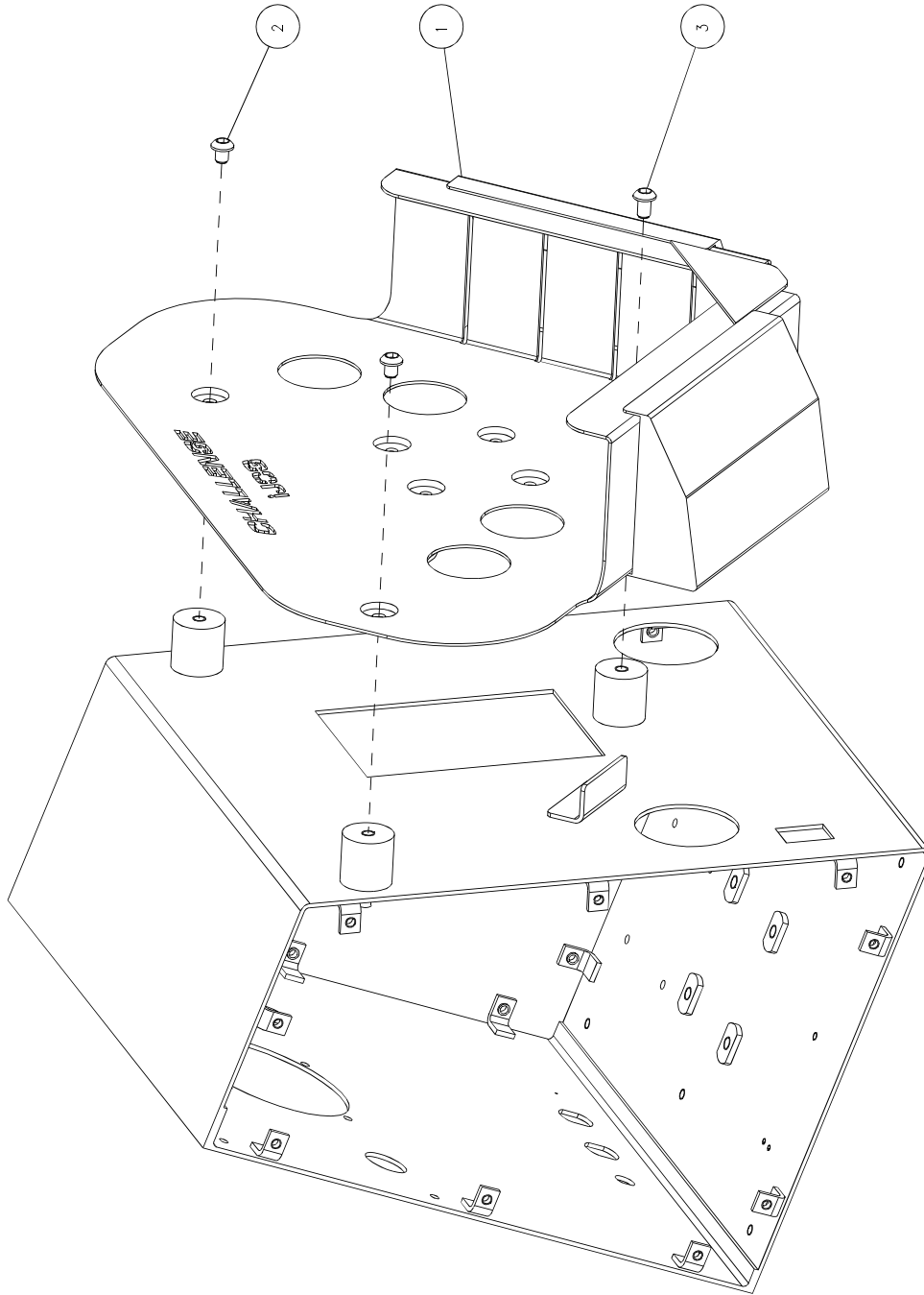


Main Assembly- iJOG with Air

66000-2 Sht. 2

ITEM	PART NO.	DESCRIPTION	QTY
1	14050	SERIAL PLATE	1
2	40016-8	MOUNT - VIBRATION	3
3	66001-1	BASE WELDMENT	1
4	66007	VACUUM MOTOR	1
5	66016	LEVELING PAD	4
6	E-530-13	FUSE HOLDER- FUSE W/CAP (INCHES)	1
7	E-1140-17	ROCKER SWITCH	1
8	E-1143	BRIDGE RECTIFIER	1
9	E-2189-2	TUBING- CORRUGATED FLEXIBLE	1
10	E-2190-2	3/4 CONDUIT FITTING	2
11	E-2626-4	TERMINAL STRIP (4P)	1
12	EE-3191	POWER CORD - 120V	1
13	EE-3192	FOOT SWITCH ASSEMBLY	1
14	H-6417-5	NUT - 5/16-18 HEX	3
15	H-6423-4	NUT - 1/4-20 HEX KEP	6
16	H-6899-1004	"SCREW - #10 X 1/2 PHIL PAN SELF-TAP,F"	4
17	H-6910-408	SCREW - 1/4-20 X 1 BUTTON HEAD CAP	1
18	H-6918-102404	SCREW - #10-24 X 1/2 SOCKET HEAD CAP	1
19	H-6918-63204	SCREW - #6-32 X 1/2 SOCKET HEAD CAP	2
20	H-6924-004	SCREW - #0 X 1/4 DRIVE SCREW	2
21	H-7324-8	WASHER - 1/4 INT TOOTH	2
22	H-7324-#10	WASHER - #10 INT TOOTH	1
23	H-7324-#6	WASHER - #6 INT TOOTH	2
24	H-7327-10	WASHER - 5/16 MEDIUM LOCK	3
25	S-1350-16	STRAIN RELIEF BUSHING	2
26	S-1781-164	POWER LABEL	1
27	S-1781-42	LABEL - GROUND	1

8.4 66000-2 Main Assembly- iJOG with Air Sht. 3

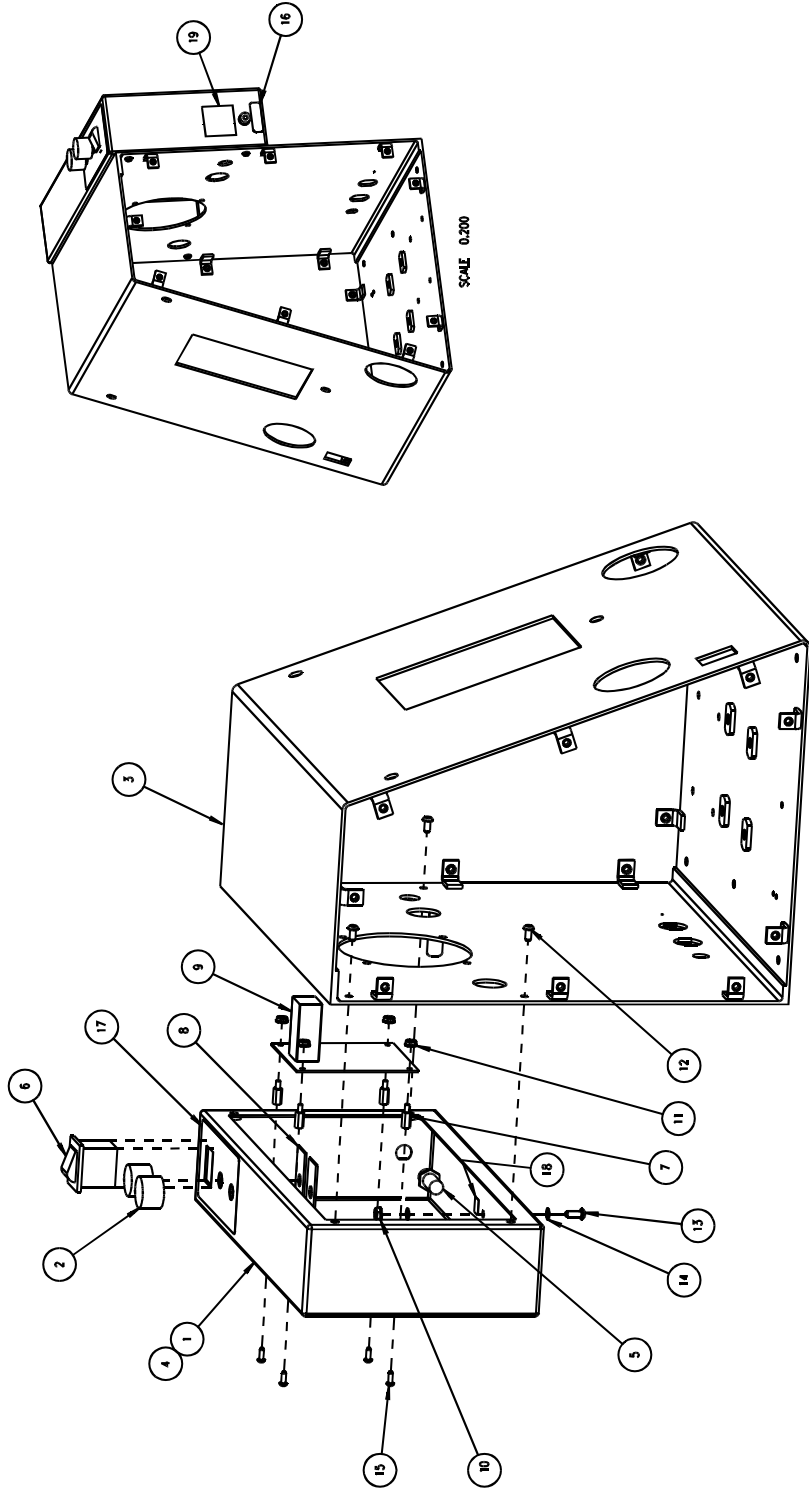


Main Assembly- iJOG with Air

66000-2 Sht. 3

ITEM	PART NO.	DESCRIPTION	QTY
1	66011-1	JOGGING TRAY	1
2	H-6910-503SS	SCREW - 5/16-18 X 3/8 BUT. HEAD CAP STAINLESS	2
3	H-6910-504SS	SCREW - 5/16-18 X 1/2 BUT. HEAD CAP STAINLESS	1

8.5 66000-2 Main Assembly- iJOG with Air Sht. 4

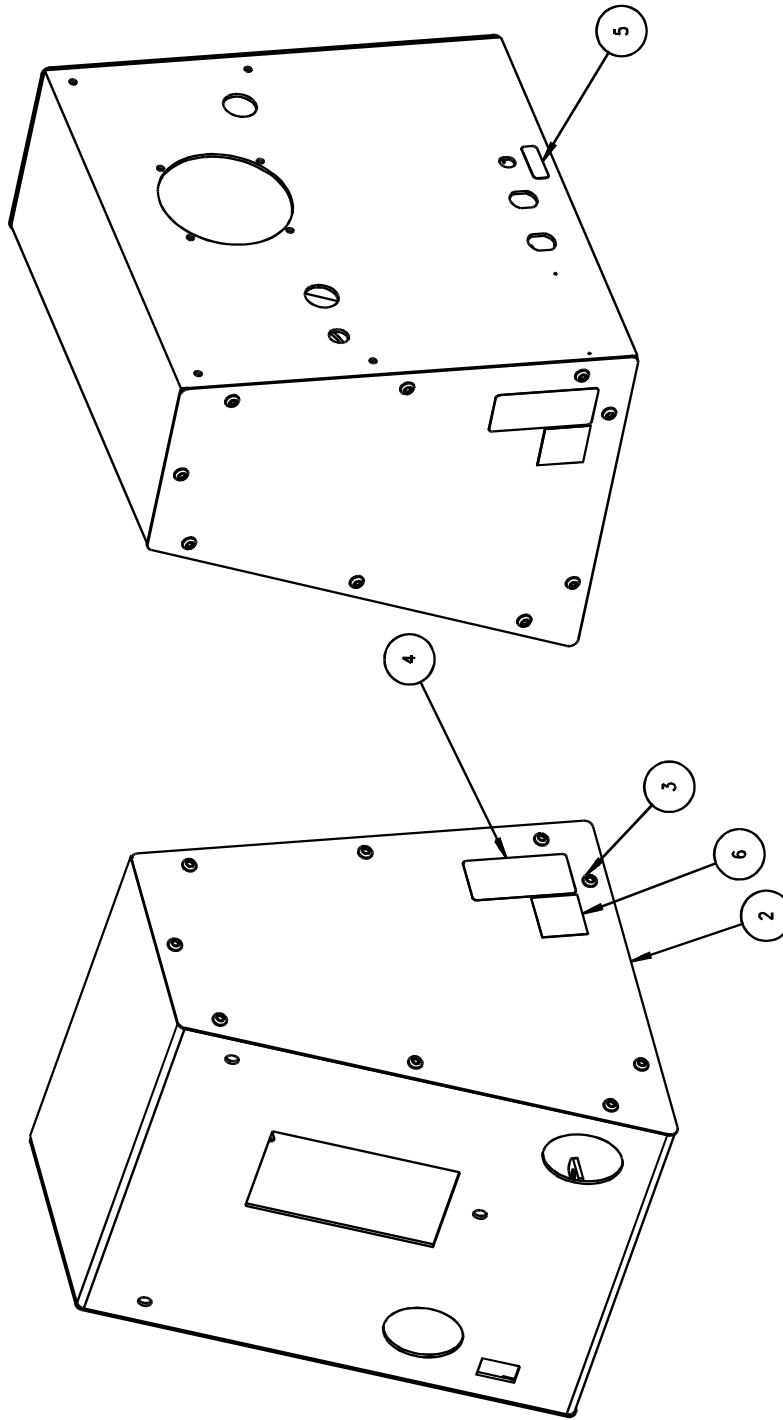


Main Assembly- iJOG with Air

66000-2 Sht. 4

ITEM	PART NO.	DESCRIPTION	QTY
1	EE-3226	CONTROL BOX ASSEMBLY – 120V OPTION	1
1	EE-3227	CONTROL BOX ASSEMBLY – 230V OPTION	1
2	35126-3	KNOB	REF
3	66001-1	BASE WELDMENT	REF
4	66008	VACUUM COVER	REF
5	E-530-13	FUSE HOLDER- FUSE W/CAP (INCHES)	REF
6	E-1140-17	ROCKER SWITCH	REF
7	E-1152-56	STANDOFF	REF
8	E-3181	ISOLATION SHIELD- POTENTIOMETER	REF
9	EE-3179	CIRCUIT BOARD	REF
10	H-6423-#10	NUT - #10-24 HEX KEP	REF
11	H-6423-#6	NUT - #6-32 HEX KEP	REF
12	H-6910-102403	SCREW - #10-24 X 3/8 BUTTON HEAD CAP	4
13	H-6910-102404	SCREW - #10-24 X 1/2 BUTTON HEAD CAP	REF
14	H-7324-#10	WASHER - #10 INT TOOTH	REF
15	H-6910-63203	SCREW - #6-32 X 3/8 BUTTON HEAD CAP	REF
16	S-1781-160	LABEL - FUSE 7A SB	REF
17	S-1781-163	BLOWER LABEL	REF
18	S-1781-42	LABEL - GROUND	REF
19	S-1781-50	LABEL - ELECTRIC SHOCK	REF

8.6 66000-2 Main Assembly- iJOG with Air Sht. 5

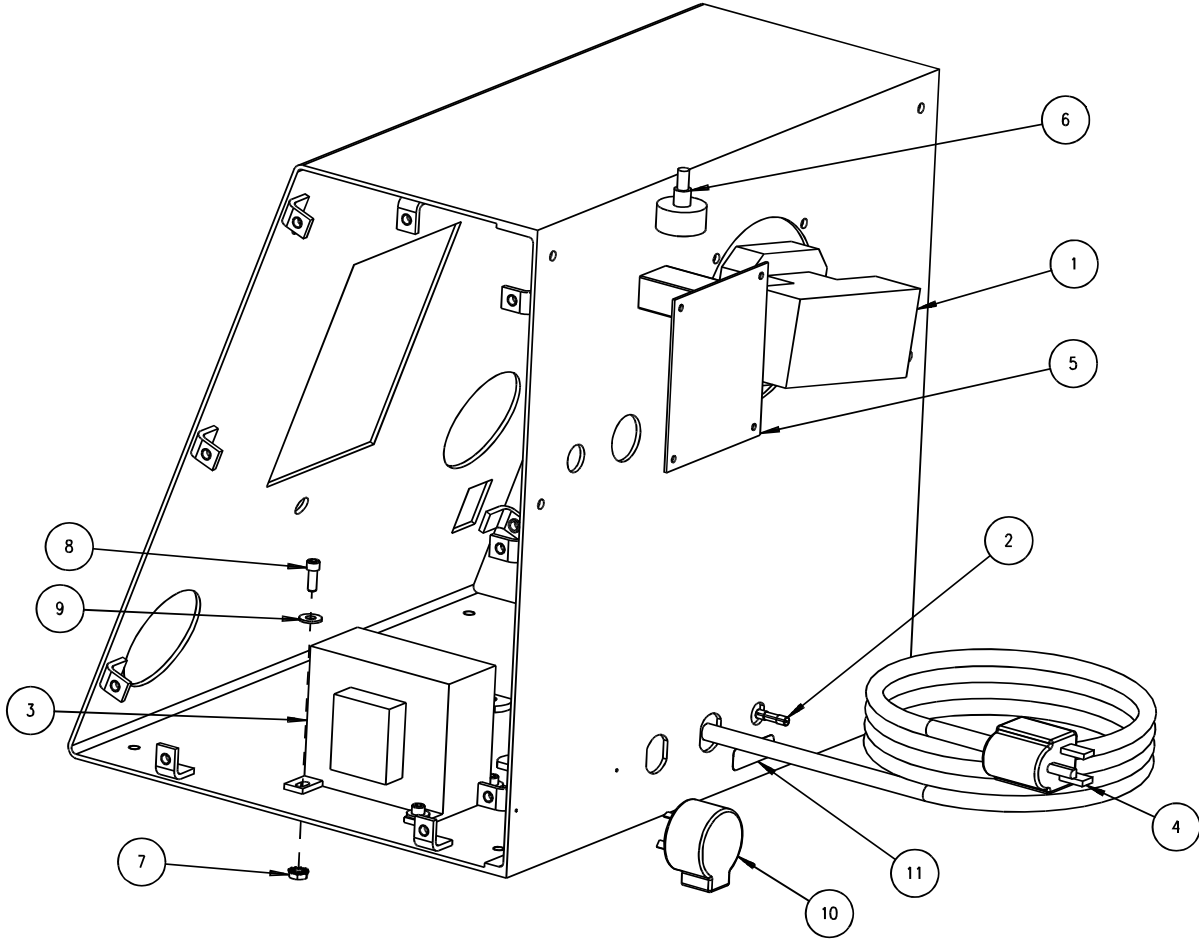


Main Assembly- iJOG with Air

66000-2 Sht. 5

ITEM	PART NO.	DESCRIPTION	QTY
1	66001-1	BASE WELDMENT	1
2	66006	SIDE COVER	2
3	H-6910-403	SCREW - 1/4-20 X 3/8 BUTTON HEAD CAP	18
4	S-1781-15	LABEL - MOVING PARTS HAZARD	2
5	S-1781-165	LABEL - FUSE 5A SB	1
6	S-1781-50	LABEL - ELECTRIC SHOCK	2

8.7 66000-2 Main Assembly- iJOG with Air Sht. 6, 230V Option Parts

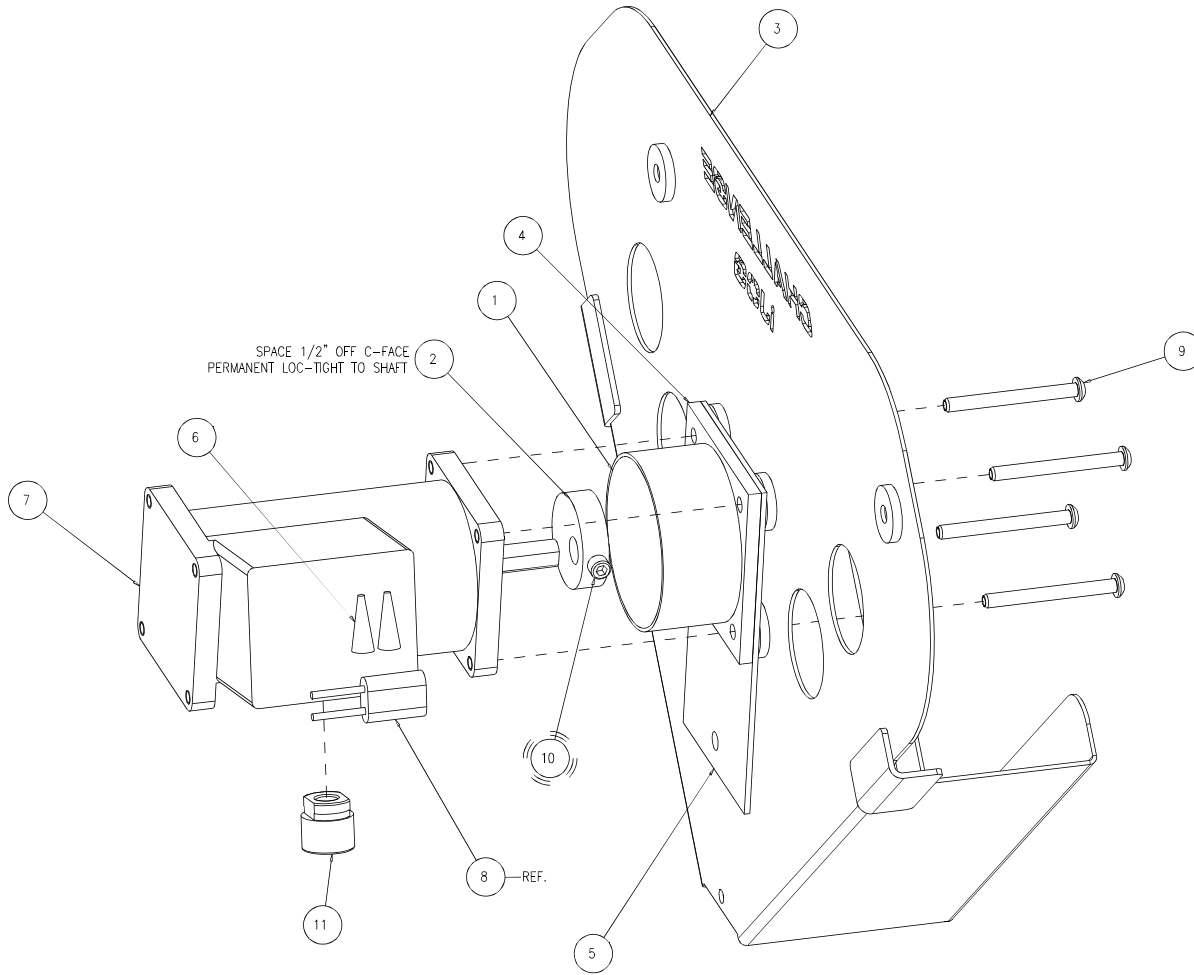


Main Assembly- iJOG with Air 230V Option Parts

66000-2 Sht. 6

ITEM	PART NO.	DESCRIPTION	QTY
1	66007-1	VACUUM MOTOR- 230V	1
2	E-889-1	FUSE- 1.5 A SB	1
3	E-2742-12	TRANSFORMER	1
4	EE-2778-3	POWER CORD - 120V	1
5	EE-3179-1	CIRCUIT BOARD- 230V OPTION	1
6	EE-3190-1	PLUG ASSEMBLY- POTENTIOMETER- 230V	1
7	H-6423-#10	NUT - #10-24 HEX KEP	4
8	H-6918-102404	SCREW - #10-24 X 1/2 SOCKET HEAD CAP	4
9	H-7321-#10	WASHER - #10 SAE PLAIN	4
10	S-1033-10	PLUG- MALE, SIDE ENTRY	1
11	S-1781-166	LABEL - FUSE 1.5A SB	1

8.8 66000-3 Main Assembly- iJOG without Air Sht. 1

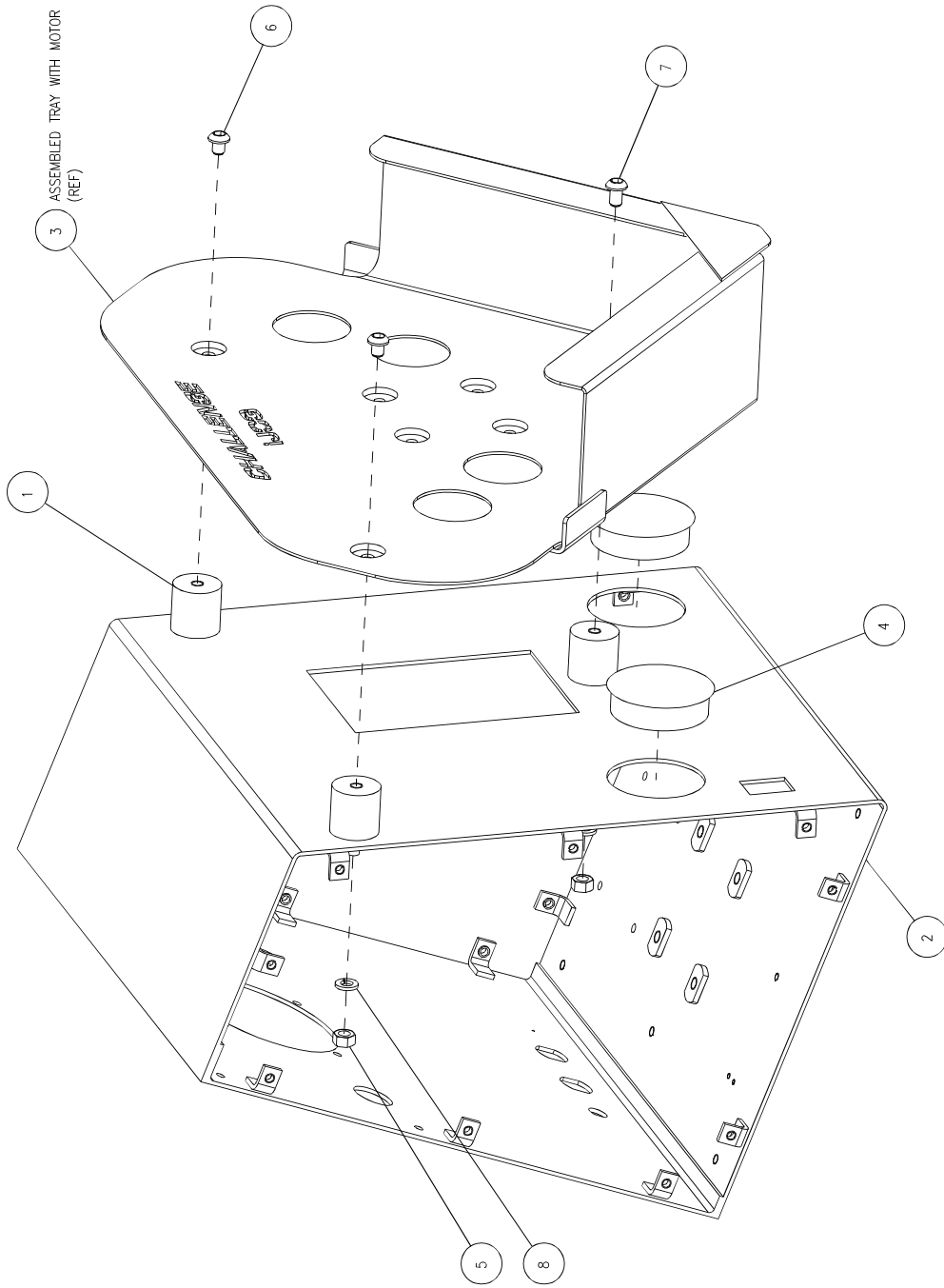


Main Assembly- iJOG without Air Sht. 1

66000-3 Sht. 1

ITEM	PART NO.	DESCRIPTION	QTY
1	66004-1	TUBE 1	
2	66005-1	ECCENTRIC WEIGHT	1
3	66015-1	NON-AIR JOGGING TRAY	1
4	66024	REINFORCEMENT PLATE	1
5	66025	REINFORCEMENT PLATE	1
6	E-1237-1	WIRE NUT - RED	2
7	E-1600-201	3500 RPM DC MOTOR	1
8	E-1736-2	QUENCHARC	1
9	H-6910-420SS	SCREW - 1/4-20 X 2-1/2 BUT. HEAD CAP STAINLESS	4
10	H-6918-403	SCREW - 1/4-20 X 3/8 SOCKET HEAD CAP	1
11	S-1350-16	STRAIN RELIEF BUSHING	1

8.9 66000-3 Main Assembly- iJOG without Air Sht. 2

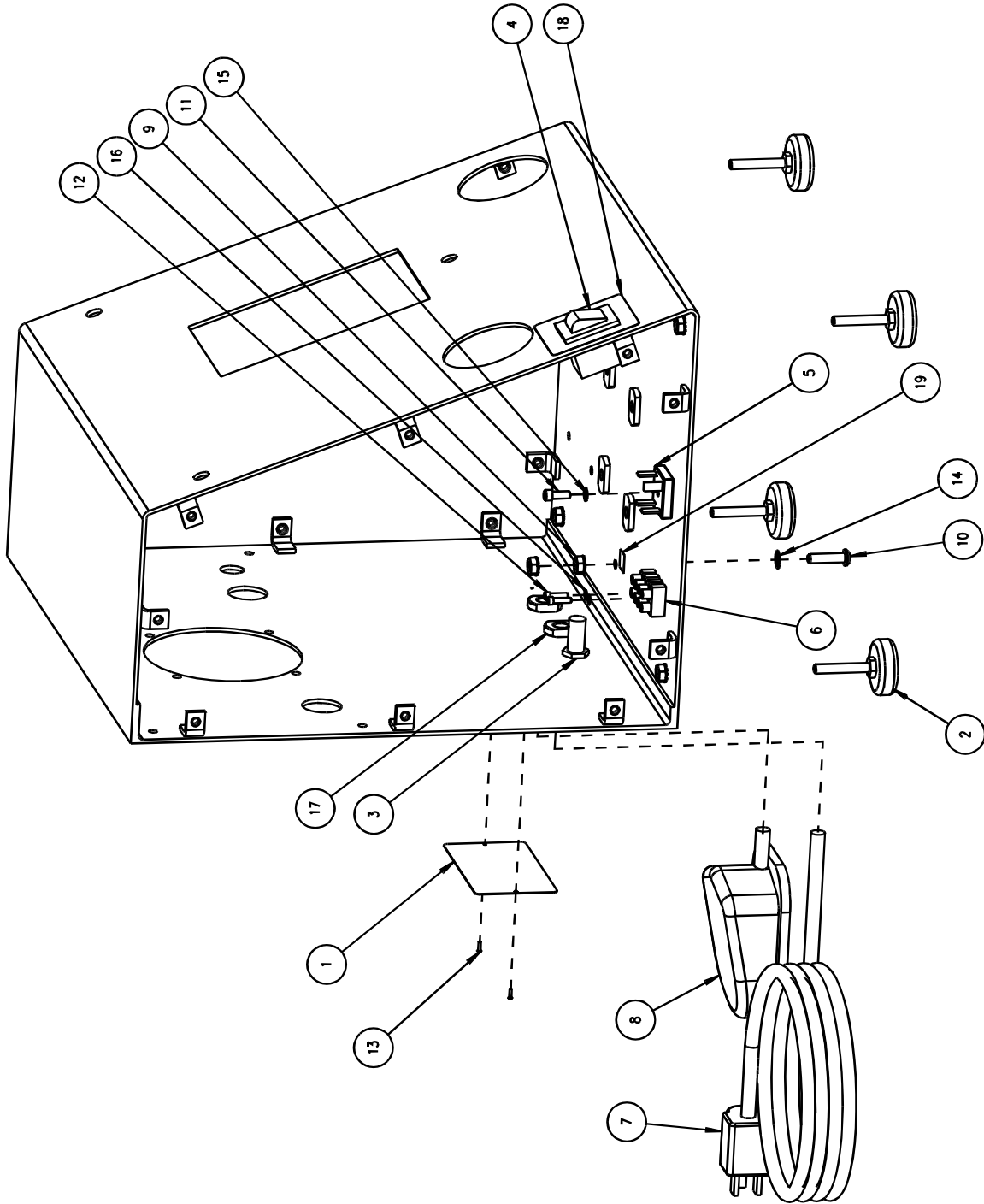


Main Assembly- iJOG without Air Sht. 2

66000-3 Sht. 2

ITEM	PART NO.	DESCRIPTION	QTY
1	40016-8	MOUNT - VIBRATION	3
2	66001-1	BASE WELDMENT	1
3	66015-1	NON-AIR JOGGING TRAY	1
4	E-2196-22	HOLE PLUG 2	
5	H-6417-5	NUT - 5/16-18 HEX	3
6	H-6910-503SS	SCREW - 5/16-18 X 3/8 BUT. HEAD CAP STAINLESS	2
7	H-6910-504SS	SCREW - 5/16-18 X 1/2 BUT. HEAD CAP STAINLESS	1
8	H-7327-10	WASHER - 5/16 MEDIUM LOCK	3

8.10 66000-3 Main Assembly- iJOG without Air Sht. 3

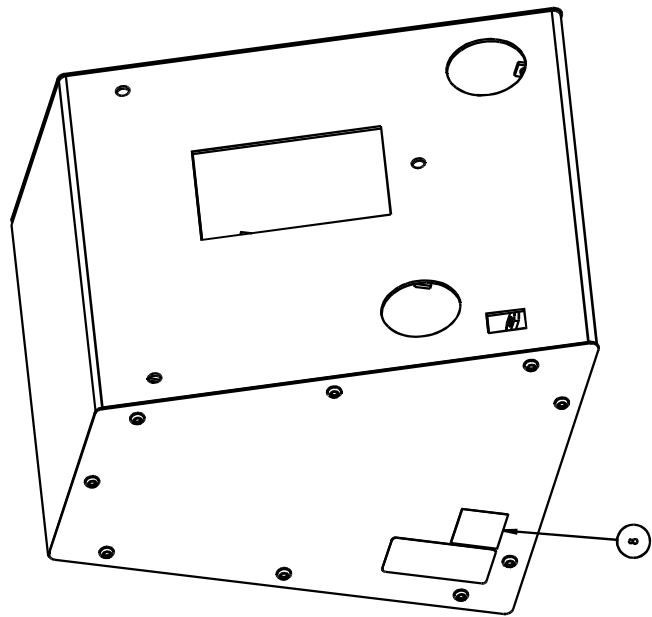
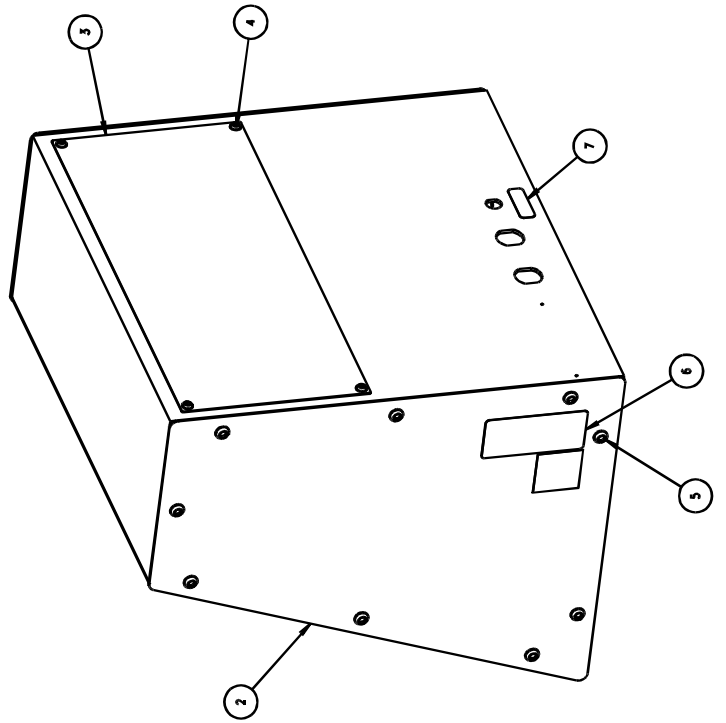


Main Assembly- iJOG without Air Sht. 3

66000-3 Sht. 3

ITEM	PART NO.	DESCRIPTION	QTY
1	14050	SERIAL PLATE	1
2	66016	LEVELING PAD	4
3	E-530-13	FUSE HOLDER- FUSE W/CAP (INCHES)	1
4	E-1140-17	ROCKER SWITCH	1
5	E-1143	BRIDGE RECTIFIER	1
6	E-2626-4	TERMINAL STRIP (4P)	1
7	EE-3191	POWER CORD - 120V	1
8	EE-3192	FOOT SWITCH ASSEMBLY	1
9	H-6423-4	NUT - 1/4-20 HEX KEP	6
10	H-6910-408	SCREW - 1/4-20 X 1 BUTTON HEAD CAP	1
11	H-6918-102404	SCREW - #10-24 X 1/2 SOCKET HEAD CAP	1
12	H-6918-63204	SCREW - #6-32 X 1/2 SOCKET HEAD CAP	2
13	H-6924-004	SCREW - #0 X 1/4 DRIVE SCREW	2
14	H-7324-8	WASHER - 1/4 INT TOOTH	1
15	H-7324-#10	WASHER - #10 INT TOOTH	1
16	H-7324-#6	WASHER - #6 INT TOOTH	2
17	S-1350-16	STRAIN RELIEF BUSHING	2
18	S-1781-164	POWER LABEL	1
19	S-1781-42	LABEL - GROUND	1

8.11 66000-3 Main Assembly- iJOG without Air Sht. 4

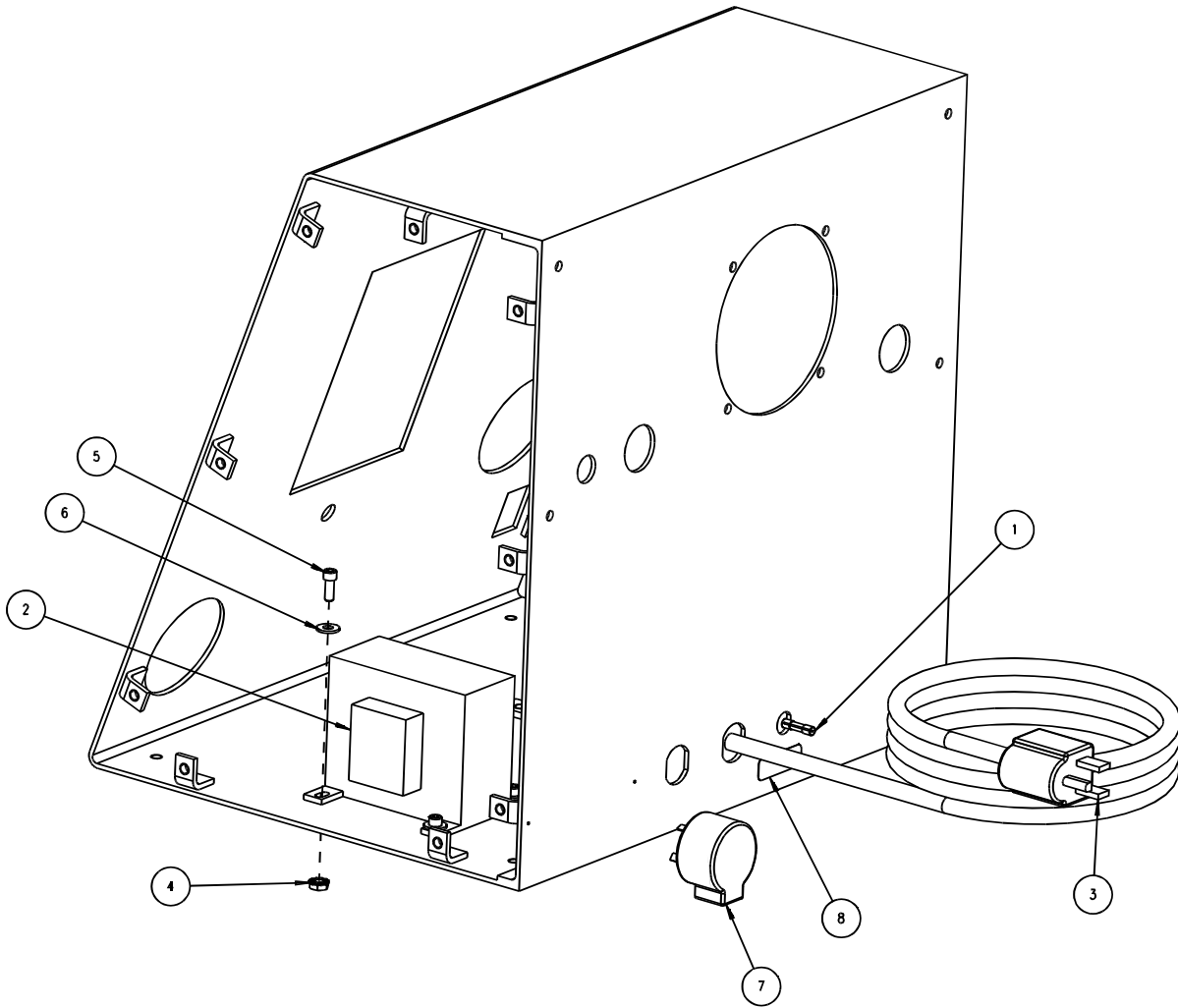


Main Assembly- iJOG without Air Sht. 4

66000-3 Sht. 4

ITEM	PART NO.	DESCRIPTION	QTY
1	66001-1	BASE WELDMENT	1
2	66006	SIDE COVER	2
3	66013	BACK COVER	1
4	H-6910-102403	SCREW - #10-24 X 3/8 BUTTON HEAD CAP	4
5	H-6910-403	SCREW - 1/4-20 X 3/8 BUTTON HEAD CAP	18
6	S-1781-15	LABEL - MOVING PARTS HAZARD	2
7	S-1781-165	LABEL - FUSE 5A SB	1
8	S-1781-50	LABEL - ELECTRIC SHOCK	2

8.12 66000-3 Main Assembly- iJOG without Air Sht. 5 (Aus)



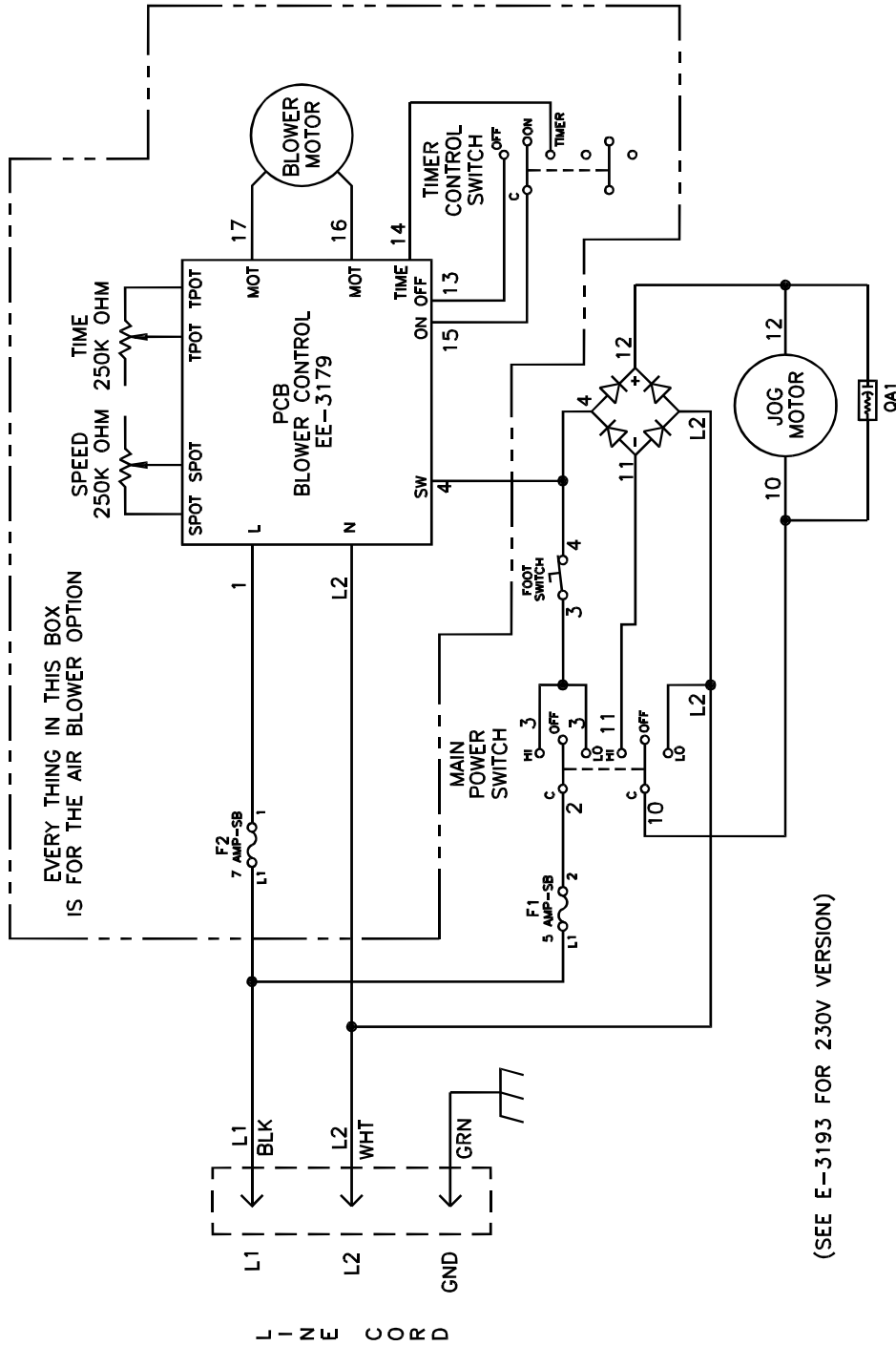
Main Assembly- iJOG without Air Sht. 5

66000-3 Sht. 5

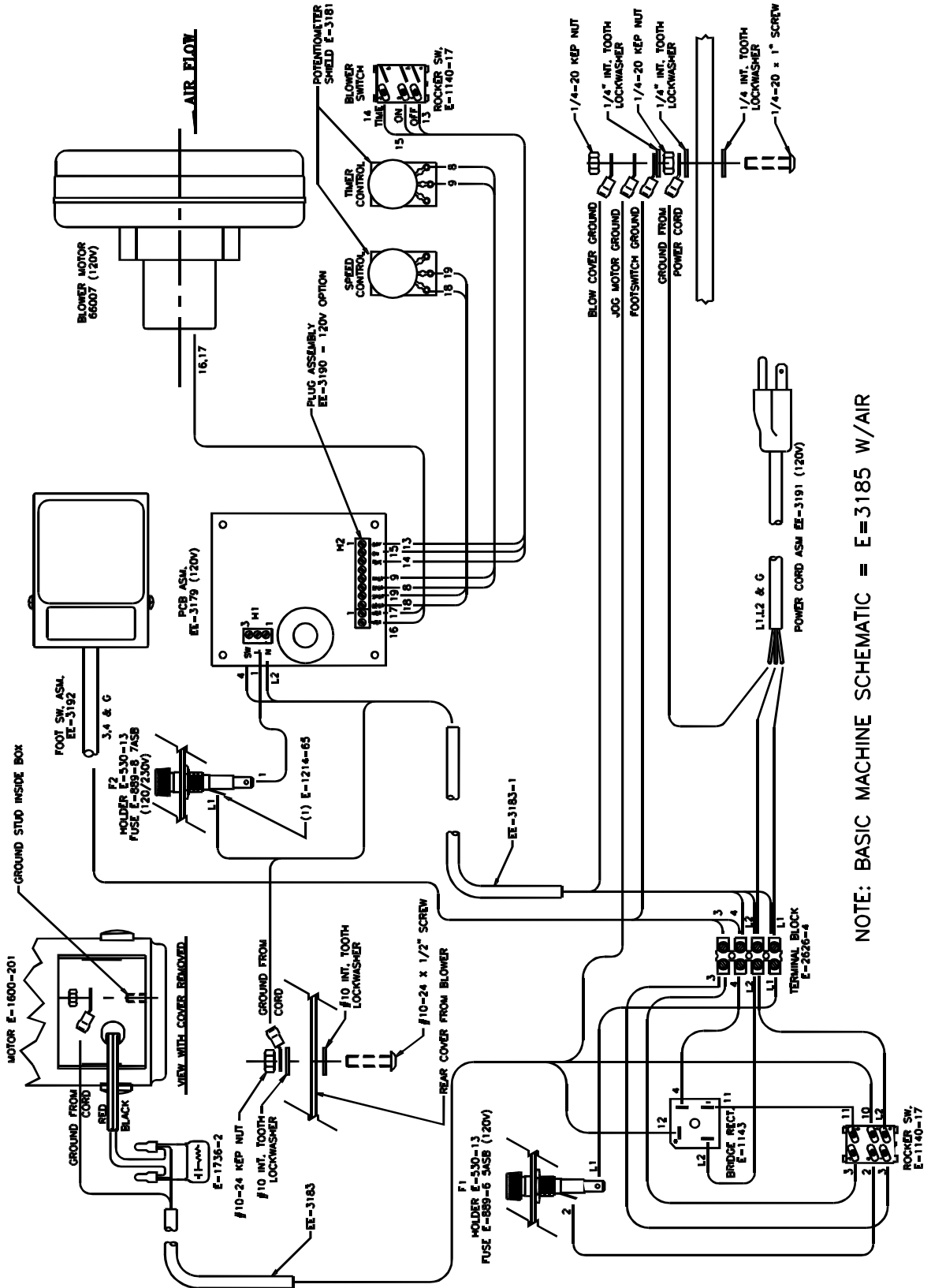
ITEM	PART NO.	DESCRIPTION	QTY
1	E-889-1	FUSE- 1.5 A SB	1
2	E-2742-12	TRANSFORMER	1
3	EE-2778-3	POWER CORD - 120V	1
4	H-6423-#10	NUT - #10-24 HEX KEP	4
5	H-6918-102404	SCREW - #10-24 X 1/2 SOCKET HEAD CAP	4
6	H-7321-#10	WASHER - #10 SAE PLAIN	4
7	S-1033-10	PLUG- MALE, SIDE ENTRY	1
8	S-1781-166	LABEL - FUSE 1.5A SB	1

9.0 Wiring and Schematics

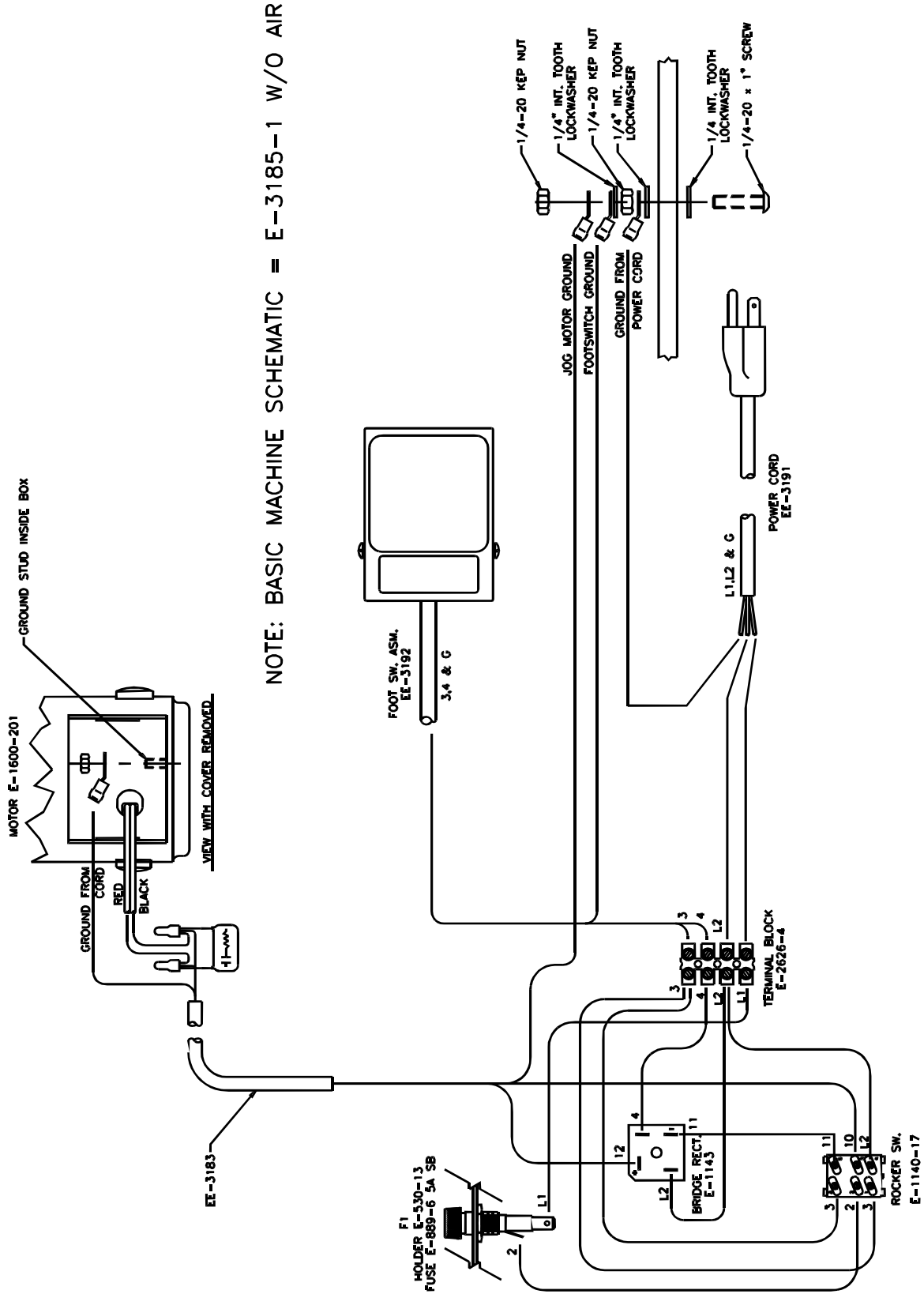
9.1 E-3185 Rev. "A" Basic Machine Schematic- 120V



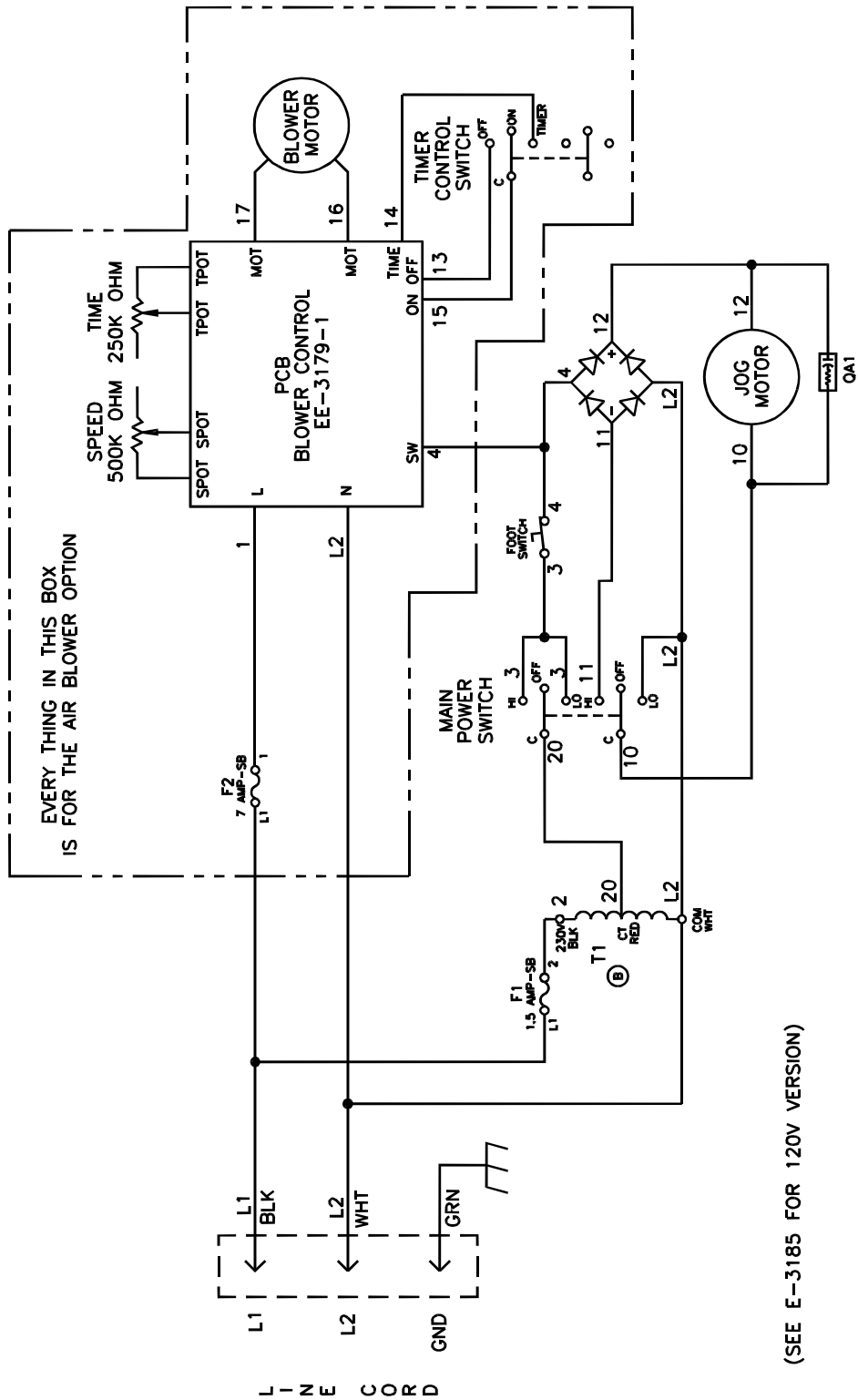
9.2 E-3180 Rev. "A" Interconnection Diagram with Air- 120V



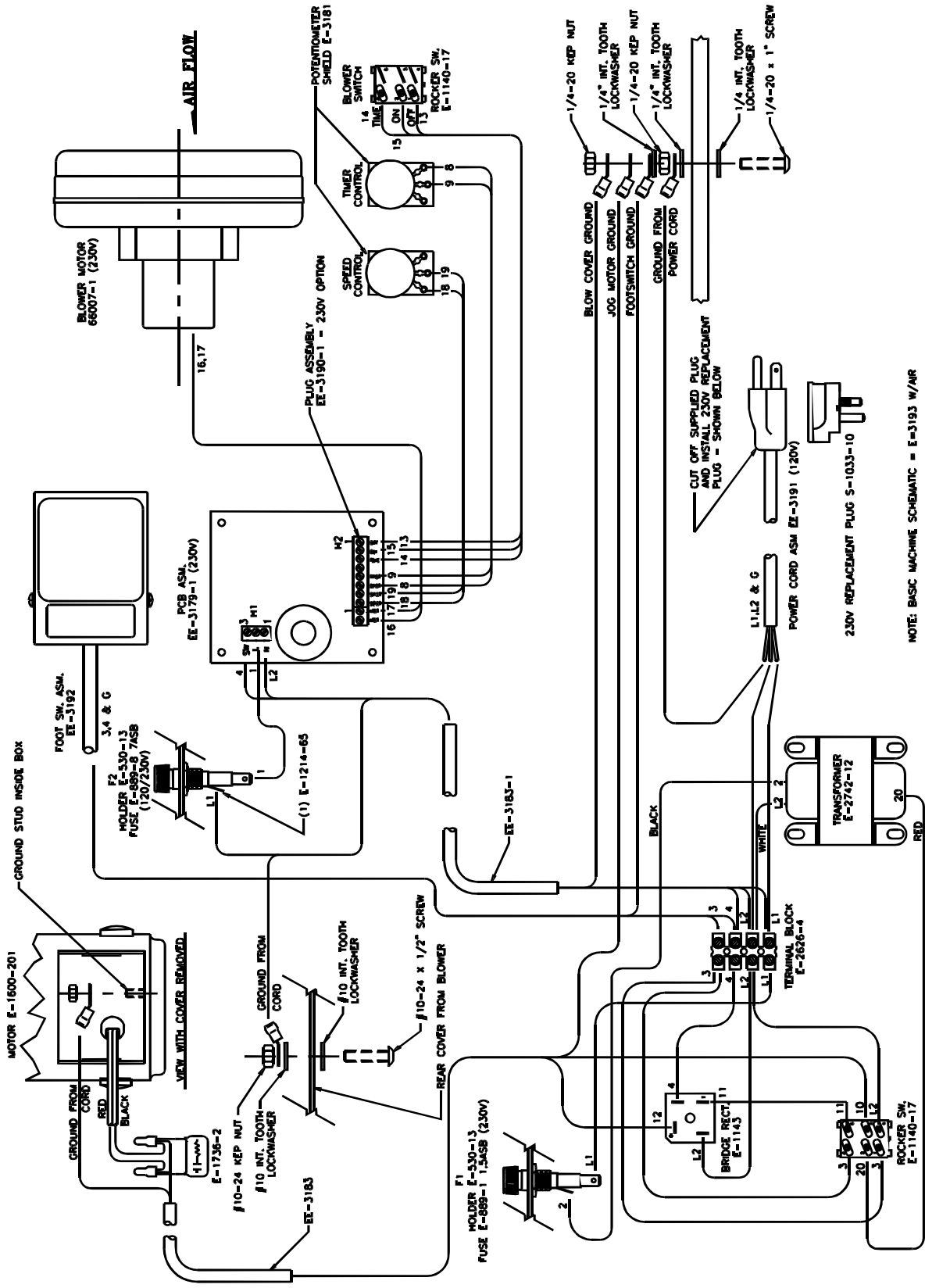
9.3 E-3180-1 Rev. "A" Interconnection Diagram without Air- 120V



9.4 E-3193 Rev. "B" Basic Machine Schematic- 230V

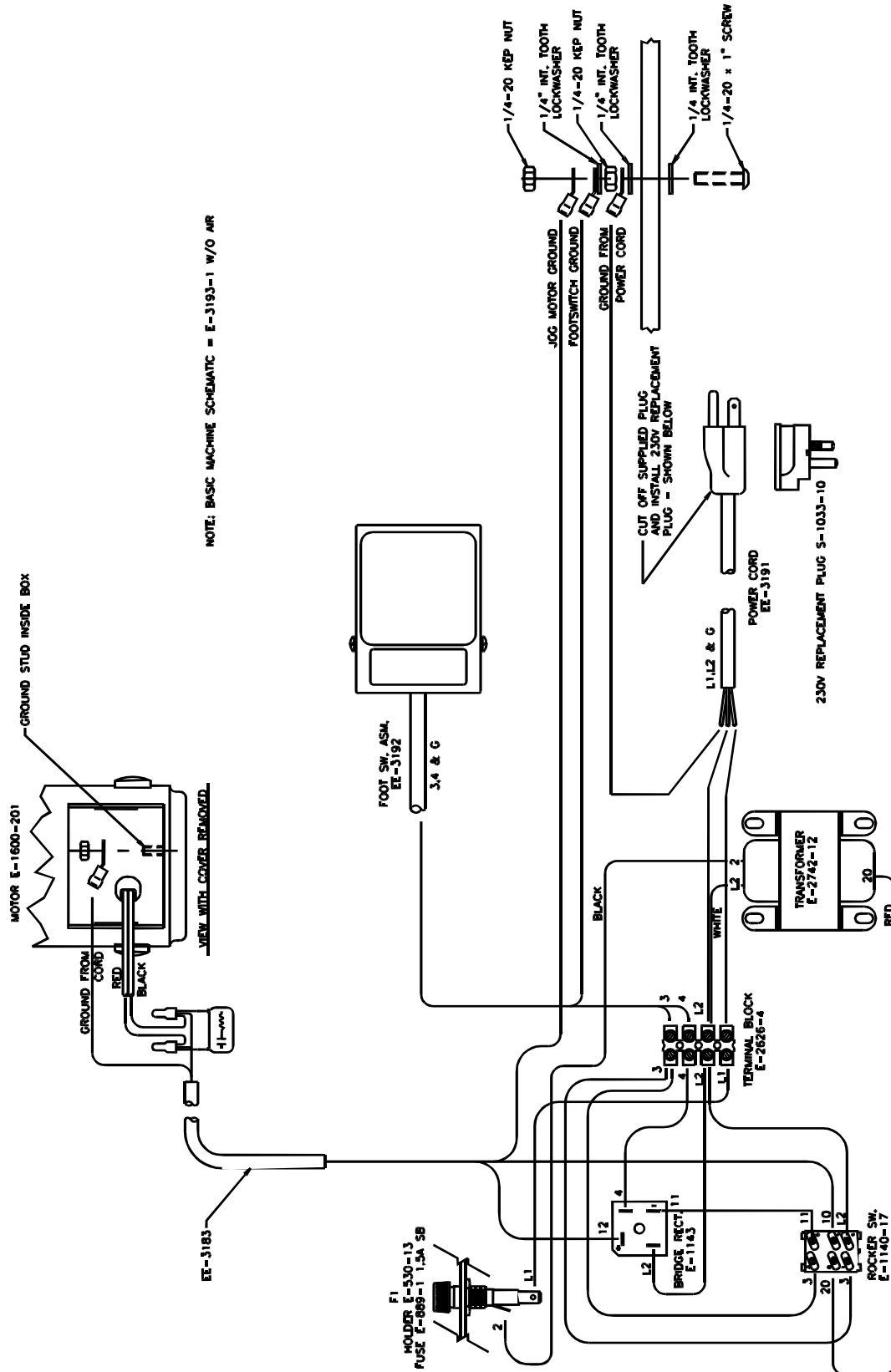


9.5 E-3189 Rev. "A" Interconnection Diagram with Air- 230V



NOTE: BASIC MACHINE SCHEMATIC = E-3193 W/M/R

9.6 E-3189-1 Rev. "A" Interconnection Diagram without Air- 230V



NOTE: BASIC MACHINE SCHEMATIC = E-3193-1 W/O AIR

