

The Challenge Machinery Company provides owner's manuals on its products solely as a courtesy to its customers. See the information below before using this manual.

These manuals are for reference only. These manuals include products which are non-current, unsupported or no longer produced by The Challenge Machinery Company, and are provided solely as an accomodation to our customers. By providing these manuals, The Challenge Machinery Company makes no representation or warranty as to the products, their current condition, or their suitability or fitness for use in any particular application, which are the sole and independent responsibility of the product owner and user.

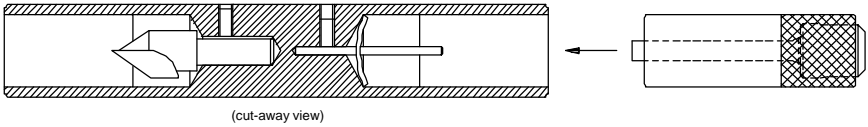
**Older products may not comply with current safety procedures, guidelines or regulations, and it is the product owner's and user's responsibility to evaluate the suitability and fitness of the products in their current use and application. The Challenge Machinery Company makes no representation, warranty or recommendation regarding any modifications which may be required on non-current or unsupported products. The Challenge Machinery Company assumes no liability for any modification or alteration to any Challenge product, and any such modification or alteration to any Challenge product is not authorized by The Challenge Machinery Company.** The availability of these manuals is solely for the purpose of providing reference information for the products.

This manual may not be complete in all aspects of product maintenance and repair. **All products should be used only by qualified and properly trained personnel, following proper safety procedures.** All products should be regularly inspected and maintained, and their condition, application and use should be periodically evaluated by qualified personnel. Only qualified and properly trained technicians should perform maintenance, repair and replacement procedures. Attempting these procedures without proper training may cause machine damage or operator injury!

Products may be unsupported by The Challenge Machinery Company due to age or the unavailability of parts from their original manufacturer. No parts or product support will be available to repair or maintain unsupported products. Older products may not be UL listed (if the product does not have a UL label it is not a listed product), and may not comply with applicable installation or other regulations or requirements if relocated to a new facility. Many municipalities require a product to be UL listed before an electrician will connect power to them. Often the cost of updating an older product to comply with current safety regulations is greater than the value of the product.

**Instructions for using the  
CHALLENGE HOLLOW DRILL  
SHARPENER / CHIP REMOVER  
(A-4950-2)**

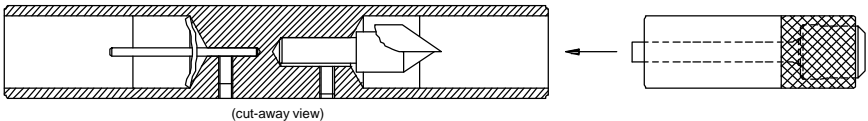
**CHIP REMOVER**



**NOTE: Chip remover only for use with hollow drill diameters 3/16" and larger**

1. CAREFULLY place a hollow drill in the holder section as shown, and insert the holder (with drill) into the chip remover end as shown.
2. Firmly tap the entire assembly on a solid surface to remove the chips from the hollow drill.

**DRILL SHARPENER**



1. CAREFULLY place a hollow drill in the holder section as shown, and insert the holder (with drill) into the sharpener end as shown. Be very careful to bring the drill and cutting tool together with out bumping. **The cutting tool is made of GLASS HARD material and may be chipped.**
2. USE CLOCKWISE ROTATION while maintaining an even pressure, until the hollow drill is sharpened (usually two or three turns). The cutting tool seldom requires replacing, but when it does become necessary, the bit can be ordered through your Challenge Dealer (p/n 4952).

manufactured by



**MACHINERY COMPANY**

1433 Fulton Avenue • Grand Haven, Michigan 49417-1594 U.S.A.  
Phone: 616-842-8300 • Fax: 616-842-6511 • www.challengemachinery.com