

#### Standard Features - FD 404A1

- **Align, Dry, Remove Static in One Step:** The FD 404A1 Air Jogger is ideal for print shops and production houses as it aligns and dries printed sheets in a single process while reducing static electricity
- **Foot Pedal Control:** Allows for two-handed loading and unloading
- **Easy-to-Use Control Panel**
- **Variable Speed Control:** Up to 3,000 vibrations per minute
- **Variable Air Pressure Control:** Up to 29,000 rpm, reduces jogging time
- **Tilting Jog Bin:** V-shaped bin adjusts from vertical to horizontal to accommodate various operating requirements, including large format paper stacks, and criss-cross stacked piles
- **High Capacity:** Jogs up to 940 sheets 20#
- **60-Second Countdown Timer:** Capable of unattended jogging
- **Operating Modes:** Vibrate and Air, Air-only and Vibrate-only

Formax Air Joggers are a welcome addition to print shops and production houses, jogging sheets up to 12" x 18" using air and variable vibration speed or a combination of both. Jogging aligns and dries printed sheets in a single step.

#### FD 404A1

The FD 404A1 Single-Bin Paper Jogger provides quick and easy alignment for a wide variety of paper sizes up to 12" x 18".

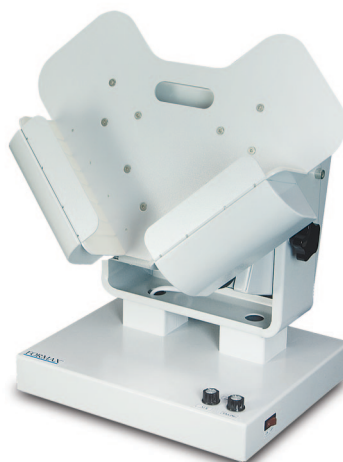


Control Panel



#### Standard Features - FD 402TA1

- **Align, Dry, Remove Static in One Step:** The FD 402TA1 Tabletop Air Jogger is ideal for print shops and production houses with limited space. It aligns and dries printed sheets in a single process while reducing static electricity
- **Variable Speed Control:** Up to 2,500 vibrations per minute
- **Variable Air Pressure Control:** Up to 29,000 rpm, reduces jogging time
- **Tilting Jog Bin:** V-shaped bin adjusts from vertical to horizontal to accommodate various operating requirements, including large format paper stacks, and criss-cross stacked piles
- **High Capacity:** Jogs up to 940 sheets 20#
- **Operating Modes:** Vibrate and Air, Air-only and Vibrate-only



#### FD 402TA1

The FD 402TA1 Tabletop Air Jogger is a compact solution for those who need jogging power in a smaller space, while offering the ability to jog 12" x 18" paper.

## FD 404A1

The FD 404A1 offers variable vibration speed and air pressure controls to reduce jogging time, allowing press sheets and digital printouts to be air-dried immediately. Operators can choose foot-pedal operation for two-handed loading and unloading.

Its V-shaped jog bin allows for jogging a criss-cross stacked pile of papers, while the vertical-to-horizontal tilt feature helps keeps large paper stacks from bending. With a capacity of up to 940 sheets and rugged all-metal construction, the FD 404A1 is an ideal piece of equipment for any print shop.

### Specifications:

|                           |                             |
|---------------------------|-----------------------------|
| Variable Vibration Speed: | Up to 3,000 vpm             |
| Variable Air Control:     | Up to 29,000 rpm            |
| Bin Size:                 | 3.75" D x 20.375" W         |
| Media Size:               | 5" x 7" Min - 12" x 18" Max |
| Sheet Capacity:           | Up to 940 sheets 20#        |
| Dimensions:               | 21" W x 18" D x 54" H       |
| Weight:                   | 100 lbs.                    |
| Voltage:                  | 110V/120V, 50/60 Hz         |
| Safety Certifications:    | CE Approved                 |

FD 404A1



## FD 402TA1

The FD 402TA1 offers a jogging solution for those with limited space. Variable vibration speed and air pressure controls allow press sheets and digital printouts to be air-dried immediately, ready for further processing.

It has a bin capacity of up to 940 sheets and is designed with a vertical-to-horizontal tilt feature to help keep larger paper stacks from bending. The FD 402TA1 is ideal for smaller print shops and production environments.

### Specifications:

|                           |                             |
|---------------------------|-----------------------------|
| Variable Vibration Speed: | Up to 2,500 vpm             |
| Variable Air Control:     | Up to 29,000 rpm            |
| Bin Size:                 | 3.75" D x 20.375" W         |
| Media Size:               | 5" x 7" Min - 12" x 18" Max |
| Sheet Capacity:           | Up to 940 sheets 20#        |
| Dimensions:               | 21" W x 15" D x 23" H       |
| Weight:                   | 60 lbs.                     |
| Voltage:                  | 110V/120V, 50/60 Hz         |
| Safety Certifications:    | CE Approved                 |

FD 402TA1

