



CoilMac-M
[MANUAL COIL PUNCH & INSERTING TABLE]

Manual Coil Punch with Inserting Table (AVAILABLE IN 2 VERSIONS)

**Punches
Up To
20 Sheets!**



**CoilMac-M41+
(PLUS)**



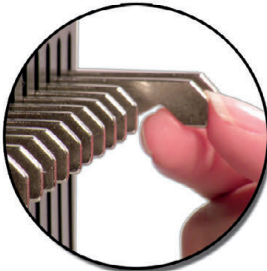
**CoilMac-M41
(Standard)**



Available with Oval Holes
These special oval-shaped holes will improve your coil binding speed by as much as 50% (Plus version only).



Coil Inserting Table
The detachable table eases & expedites the inserting of coils.



Fully Disengageable Pins
All 54 pins can be independently pulled & disengaged, for a clean & professional punch of any paper size (Plus version only).



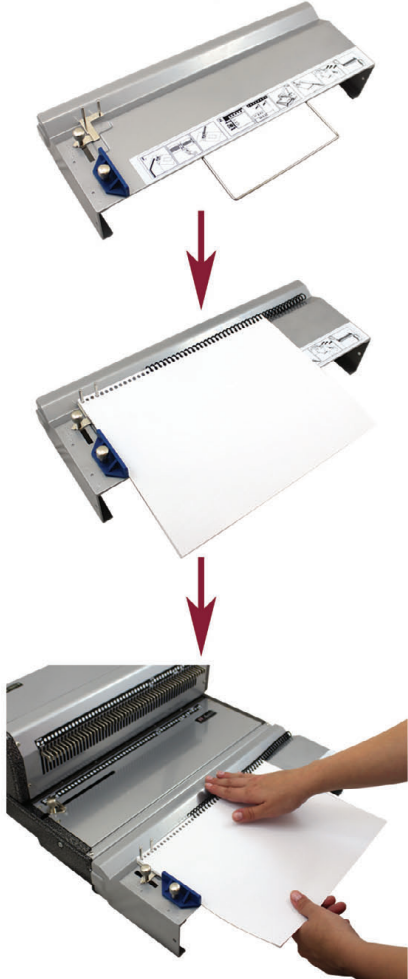
Extended Punch Length
Easily punch any sheet size up to 26".

AKILES *CoilMac-M* [MANUAL COIL PUNCH & INSERTING TABLE]

The CoilMac-M is a fully featured, heavy-duty manual coil punching machine, with a detachable Coil Inserting Table.

Coil Inserting Table

The detachable table expedites the inserting of coils, reducing costs & binding time.



Die Disengagement Pins

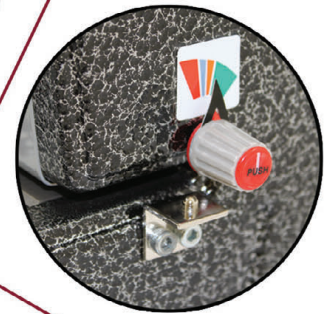
For a clean and professional punch with different paper sizes.

Side Margin Control

Provides an evenly centered punch for all document sizes.

Depth Margin Control

4 settings provide the perfect punch margin depth for different coil sizes.



Open Punching Throat & Continuous Punching Guide

For easy alignment & punching of longer documents (Up to 26").

Waste Drawer

All Metal Construction

Makes it one of the most reliable and durable coil binding systems in its class.

FREE: Coil Selector



Model	CoilMac-M41	CoilMac-M41+
Punching Operation	Manual	
Punching Capacity	20 sheets (20 lbs paper)	
Pitch	Standard 4:1 (0.25")	Letter 4:1 (0.248")
Hole Size	Round (4mm)	Oval (4mm x 5mm)
Disengagable Dies	5 out of 53	All 54
Punching Length	13" (53 holes)	13" (54 holes)
Inserting Table	Included	
Binding Capacity	Up to 2" (Manual)	
Weight & Volume	34 Lbs & 2.37 CbFt	
Warranty	1 Year	

AUTHORIZED DEALER:

