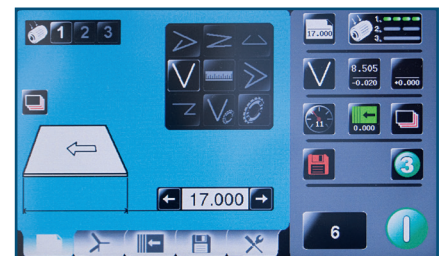




atlas-AS
AIR-FEED DOCUMENT FOLDER

update LTD
www.update ltd.com
1-800-229-0009



Full-Color Touchscreen Control Panel

- Processes up to 27,500 sheets per hour
- Full-color touchscreen control panel
- Handles sheets up to 26.5" long
- Stores unlimited jobs
- Powerful air suction feed table

FORMAX[®]

www.formax.com

Local Dealer:

The **ATLAS-AS Air-Feed Document Folder** combines high-volume output with user-friendly features in a rugged, compact footprint. It processes **up to 27,500 sheets per hour**, in various weights and sizes up to 26.5" long. Features include a **7" color touchscreen control panel**, **unlimited custom jobs**, a powerful **air suction feed table** for coated or non-coated stock, and a **low-pressure air chamber** which controls curled or statically charged paper prior to folding. The **outfeed stacker rollers adjust automatically**, and are located on the same side as the infeed, for convenient loading and unloading. A **modular perforator/scorer** is included, which can be used as a roller bypass, for sheets to be folded and output flat.



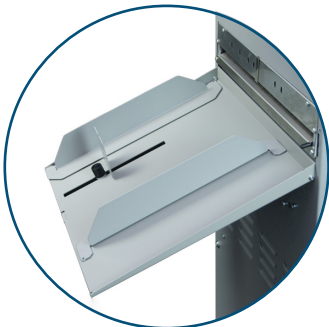
Color Touchscreen Control Panel
Graphics-based to allow for quick, easy adjustments and unlimited programming



Belt-Driven Outfeed Stacker
Outfeed and infeed are located on the same side, for operator convenience



Powerful Air Suction Feed Table
Handles coated and non-coated stock, in sizes up to 26.5" long



Perforation / Score Attachment
Delivers finished pieces to catch tray and can be used as a roller bypass



Fully Enclosed Fold Plates
Durable fold rollers made of composite material, enclosed for sound reduction

STANDARD FEATURES

- High-Speed output
- Powerful air suction feed table
- 7" color touchscreen control panel
- Low-pressure air chamber
- Simple, accurate alignment
- Batch counter
- Six standard folds in common paper sizes
- Unlimited custom folds
- Fully-enclosed fold plates
- Easy-to-use fold settings
- Durable fold rollers
- Belt-driven outfeed stacker
- Compact, rugged unit
- Perforating / Scoring
- Anti-static brushes
- Skew and micro adjustments
- Double document detector

OPTIONS

- AF-05 Narrow Sheet Guide Attachment
- AF-10 56-Tooth Perforating Wheel
- AF-15 Perforating Anvil
- AF-20 Light Scoring Wheel
- AF-30 Heavy Scoring Wheel
- AF-25 Scoring Anvil
- AF-35 Additional Perforating / Scoring Wheel
- FD402TA1/FD404A1 Air Jogger

SPECIFICATIONS

Speed	Up to 27,500 per hour*
Hopper Capacity	Up to 500 sheets, 22# bond
Pre-Set Folds	Pre-programmed for C, V, Z, Gate, Fold Out, and Double Parallel
Min. Paper Size	6.2" L x 5.5" W (157 x 140mm) (3.7" w/optional narrow attachment)
Max. Paper Size	Max: 26.5" L x 14.3" W (673 x 363mm)
Paper Weight	Min: 30# bond Max: 90# cover (variable, based on material and grain direction)
Programmable Jobs	Unlimited
Dimensions	48.8" L x 21.8" D x 54" H (1240 x 554 x 1372mm)
Weight	265 lbs (120kg)
Power	220V, 60Hz, 15A, with plug NEMA 6-15P

* Speed varies depending on paper weight