



Cut-True 13M

MANUAL PAPER CUTTER



www.update ltd.com

1-800-229-0009



Crisp, Accurate Cuts

*High-quality hardened steel blade for
razor sharp cuts, time after time*

- LED Laser Line for precision cutting
- High-quality steel blade
- Cuts sheets up to 14.5" wide
- Front and rear safety covers
- Easy-to-use clamping system

FORMAX[®]

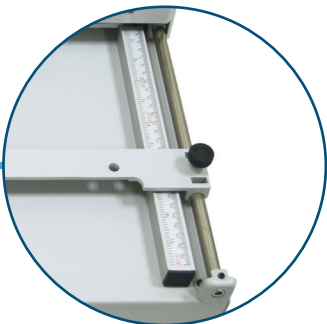
www.formax.com

Local Dealer:

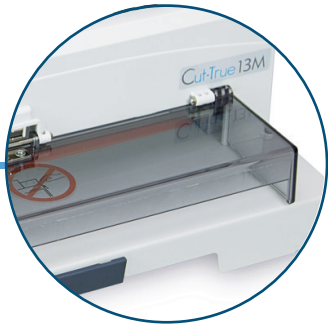
The **Cut-True 13M Tabletop Paper Cutter** is rugged and compact with a hardened steel blade, LED Laser Line for precision cutting with minimal effort, and a variety of safety features. The back gauge and calibrated scales allow operators to make fine adjustments, while the Laser Line shows exactly where the blade will cut, making crisp accurate cuts every time. The Cut-True 13M also includes safety features like front and rear transparent covers, blade lock, external blade depth adjustment, and easy-to-use blade changing handles. It cuts stacks up to 5/8” high and is ideal for small print shops and others who want to produce professional-quality brochures, invitations and more.



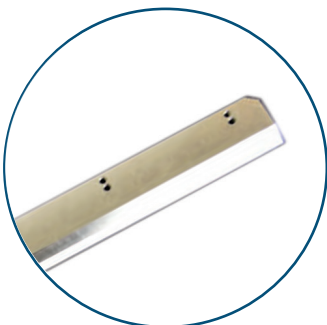
Two-Handed Cutter Arm for Safety
Using two hands keeps them away from the cutting blade



Calibrated Scale
Allows for fine adjustments in both inches and metric



Plexiglas Safety Cover
Keeps hands safe by locking the blade when cover is open



High-Quality Hardened Steel Blade
Cleanly cuts paper stacks up to 5/8” high and up to 14.5” wide



Blade Safety Tool Kit
Change blades safely and easily, and make adjustments

STANDARD FEATURES

- High-Quality hardened steel blade
- Cuts through stacks 5/8” high
- LED Laser cut line
- Front and rear safety covers
- Two-handed cutter arm and safety switch
- Easy-to-use clamping system
- Calibrated scale for fine adjustment
- Solid steel blade carrier
- External blade depth adjustment
- Scale in both inches and metric
- Complete tool kit for adjustment and maintenance
- Blade lock
- CE safety approved

SUPPLIES

- 13M-10: Replacement Blade
- 13M-20: Replacement Cutting Sticks, pkg of 8

SPECIFICATIONS

Cutting Action	Manual lever handle
Maximum Cutting Width	14.5” (370mm)
Maximum Paper Stack Height	5/8” (15mm)
Length Behind Blade	10.5” (267mm)
Length in Front of Blade	4.81” (122mm)
Narrow Cut	1.58” (40mm)
LED Laser Cut Line	Yes
Clamp Style	Lever
Back Gauge Adjustment	Thumbscrew
Back Gauge Reading	Scale, inches/metric
Blade Change Handles	Included
Dimensions	12.75” H x 18.75” W x 17.5” D (324 H x 476 W x 445 D mm)
Weight	38 lbs. (17kg)
Safety Certifications	CE approved