

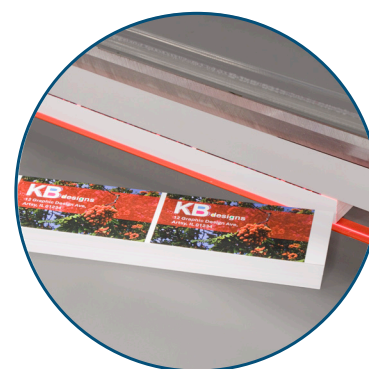


Cut-True 15M

MANUAL PAPER CUTTER



www.update ltd.com
1-800-229-0009



Crisp, Accurate Cuts
High-quality hardened steel blade for
razor sharp cuts, time after time

- LED laser line for precision cutting
- Cuts sheets up to 18.7" wide, stacks up to 3.15" high
- Hardened steel cutting blade
- Front and rear safety covers
- Geared clamping system

FORMAX®

www.formax.com

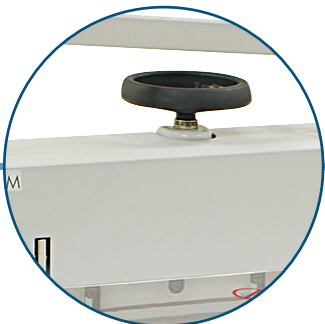
Local Dealer:

The **Cut-True 115M Manual Paper Cutter** combines accuracy with safety and user-friendly features. Using its **hardened-steel Guillotine blade** and **lever-activated blade arm**, it has the strength to cut through paper stacks up to 2.15” high and 16.9” wide. The **LED Laser Line** shows operators exactly where the blade will cut, and the **spindle-guided back gauge** and calibrated scales allow for precise adjustments. Safety is also a top priority with **front and rear plexi covers**, **blade lock**, **external blade depth adjustment**, **blade change safety tool**, and a **wooden paper push for safe alignment**. These features are all housed in a rugged all-metal stand with feet for tabletop use.



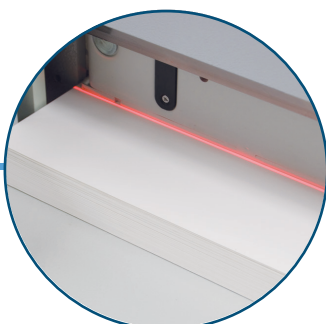
Rugged All-Metal Stand

Also includes table top feet so you can cut anywhere



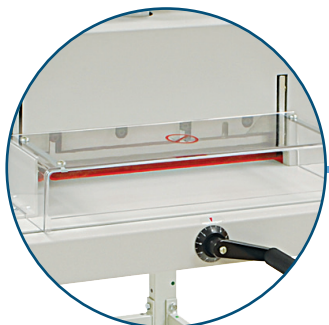
Geared Clamping System

Large clamping wheel easily keeps paper in place for accurate cutting



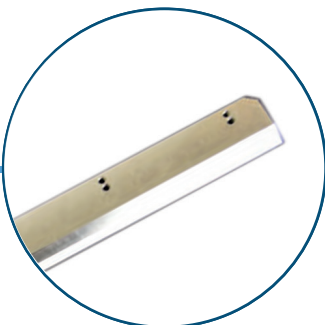
LED Laser Cutting Line

Shows exactly where the blade will cut, allowing for precise adjustments



Safety Cover & Back Gauge Crank

Plexi cover for safety and spindle guided back gauge for accuracy



High-Quality Hardened Steel Blade

Cleanly cuts paper stacks up to 2.15” high and up to 16.9” wide



Tool Kit Included

Wooden paper push and blade change tools for safe adjustments

STANDARD FEATURES

- High-Quality hardened steel blade
- Cuts paper stacks up to 2.15” high and 16.9” wide
- LED laser cut line
- Front and rear safety covers
- Manual lever cutting arm
- Geared clamping system
- Spindle-guided back gauge crank
- Calibrated scale for fine adjustment in inches and metric
- Common paper sizes clearly marked
- Solid steel blade carrier
- Wooden paper push for safe alignment
- All-metal stand and tabletop feet included
- Blade depth adjustment from outside machine
- Easy blade change access from front
- Blade change safety tool included

SUPPLIES

- 15M-10: Replacement Blade
- 15M-20: Replacement Cutting Sticks, pkg of 8

SPECIFICATIONS

Cutting Action	Manual lever handle
Maximum Cutting Width	16.9” (430mm)
Maximum Paper Stack Height	2.15” (55mm)
Length Behind Blade	17” (432mm)
Length in Front of Blade	8.25” (210mm)
Narrow Cut	1.38” (35mm)
Table Size	24.6” W x 27.5” D (625 x 700mm)
LED Laser Cut Line	Yes
Clamp Style	Spindle-guided clamping wheel
Back Gauge Adjustment	Manual crank
Back Gauge Reading	Scale, in inches and metric
Blade Change Safety Tool	Included
Dimensions	42.5” H x 26.8” W x 29.1” D (1080 x 680 x 740mm)
Weight	133 lbs. (60kg)
Safety Certifications	CE approved