



# Cut-True 31H

HYDRAULIC GUILLOTINE PAPER CUTTER



[www.updateltd.com](http://www.updateltd.com)

1-800-229-0009



#### *Crisp Precision Cuts*

*Hardened steel blade for razor sharp cuts, time after time*

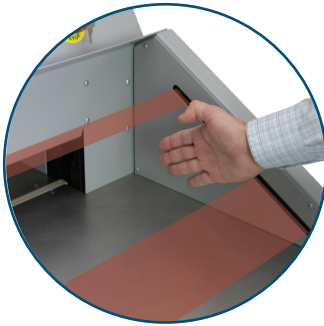
- LED laser for precision cutting
- Automatically-adjusting back gauge
- Cuts sheets up to 28.7" wide
- Infrared safety curtain
- Anti-friction ball deck with air-assist

## FORMAX®

[www.formax.com](http://www.formax.com)

Local Dealer:

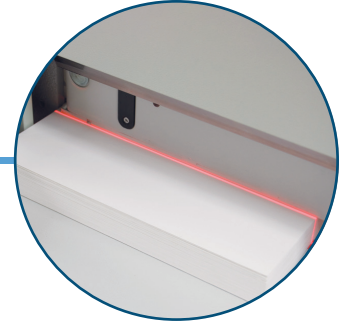
The **Cut-True 31H Hydraulic Guillotine Paper Cutter** features a hydraulic blade and clamp drive for **true two-shift operation**. Rugged heavy-duty construction allows it to handle paper stacks **up to 28" wide and up to 4" high**, with cutting accuracy of 0.1mm. User-friendly features include a **color touchscreen**, **automatically-adjusting back gauge**, and **up to 100 programmable jobs**. The **LED cut line**, **foot pedal pre-clamp**, and **electronic back gauge switch** ensure precision cutting every time. This large-format cutter includes **wide side tables**, and an **anti-friction ball deck with air-assist** making it easier to maneuver large paper stock. Safety features include **dual-button operation**, an **infrared safety curtain**, **key lock**, **blade lock**, **automatic blade return**, and a **blade change safety tool**.



**Infrared Light Beam Safety Curtain**  
Immediately stops operation if the beam is interrupted



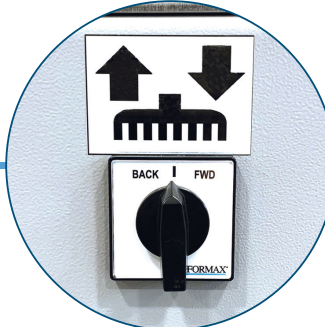
**Color Touchscreen Control Panel**  
Easily set, adjust, and program up to 100 jobs



**LED Laser Cut Line**  
See where the blade will cut while making fine adjustments



**Foot Pedal Pre-Clamp**  
Holds paper in place to check alignment prior to cutting



**Electronic Back Gauge Switch**  
Allows operators to precisely adjust the back gauge position



**Blade Change Safety Tool Kit**  
Change blades safely and easily, and make adjustments

## STANDARD FEATURES

- Designed for true two-shift operation
- Hydraulically-controlled clamp and blade
- Low-friction air-assist ball deck
- Infrared safety curtain
- Color touchscreen control panel
- LED cutting line
- Up to 100 programmable jobs
- High-speed hardened steel blade
- False clamp for sensitive paper stock
- Internal light illuminates cutting area
- Extra-large side tables
- Electronic fine-tuning switch
- Hydraulic pressure gauge knob
- Automatic blade return from any position
- Foot pedal pre-clamp
- Business card cutting mode
- Automatic-adjusting back gauge
- Solid steel blade carrier
- Two-button operation for safety
- Blade change safety tool

## SUPPLIES

- 31-10: Replacement Blade
- 31-20: Replacement Cutting Sticks, pkg of 10

## SPECIFICATIONS

Cutting Action	Dual-button hydraulic
Max Cutting Width	28.7" (730mm)
Max Paper Stack Height	3.94" (100mm)
Programmable Jobs	Up to 100 jobs with 100 steps
Length Behind Blade	26.5" (673mm)
Length in Front of Blade	25" (635mm)
Min Cut w/False Clamp	2.36" (60mm)
Min Cut w/o False Clamp	1.18" (30mm)
Table Size w/Side Tables	72.75" W x 25.125" D (1848 x 638mm)
Table Size w/o Side Tables	43.12" W x 21.125" D (1095 x 537mm)
Clamp Style	Automatic, hydraulic
Hydraulic Clamp Pressure	700-4,500 psi (49 - 316kg/cm <sup>2</sup> )
Back Gauge Adjustment	Electronic back gauge switch
Blade Change Safety Tool	Included
Dimensions	73" W x 69" D x 59.9" H (1857 x 1754 x 1445mm)
Weight	1,323 lbs (600kg)
Power Supply	208V, 60Hz, 30A dedicated line