



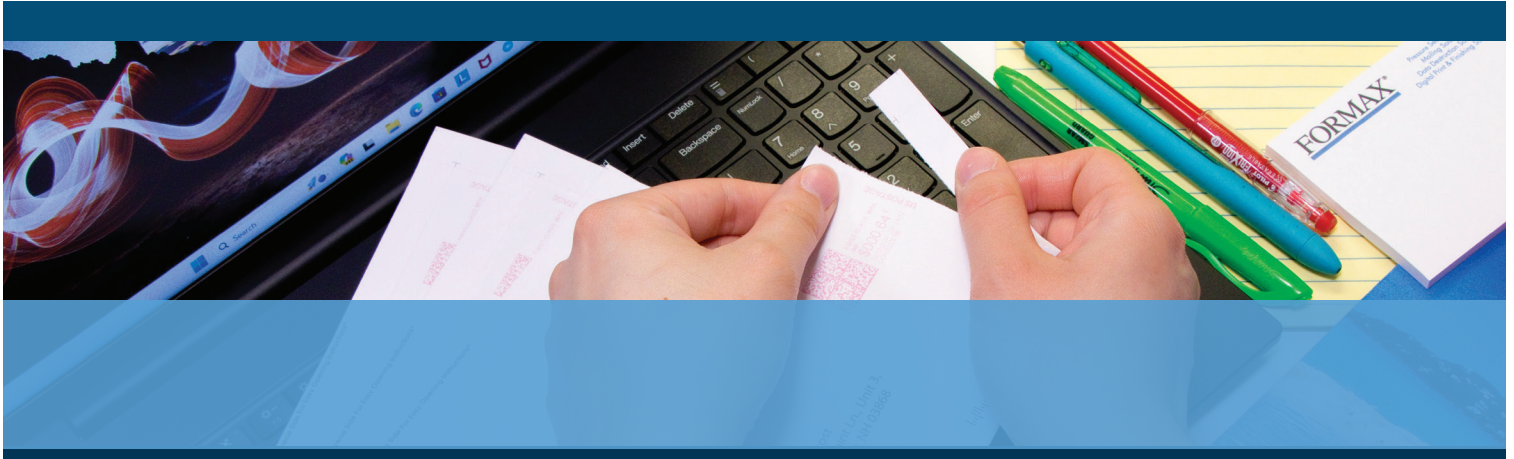
AutoSeal® FD 1202

LOW-VOLUME PRESSURE SEALER



www.updateitd.com

1-800-229-0009



- Compact desktop design
- Drop-in feed system for dependability
- 5 pre-marked popular folds
- Processes up to 38 forms per minute
- Handles forms up to 14" long

FORMAX®

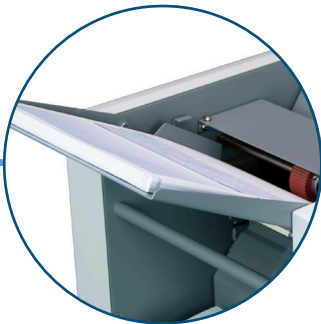
www.formax.com

Local Dealer:

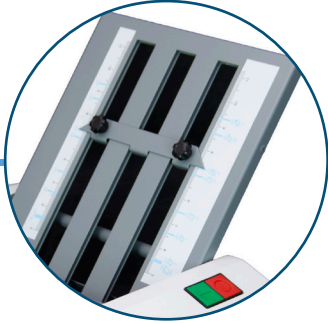
The **FD 1202 AutoSeal®** is a user-friendly solution for processing pressure-sensitive one-piece mailers. Combined with a laser printer and pressure seal forms, it creates secure, mail-ready pieces, without the need for envelopes. **Clearly marked fold plates**, simple **ergonomic controls** and a **drop-in feed system** provide easy set-up and operation, right out of the box. These features, plus a **compact desktop design**, make the FD 1202 ideal for any office environment with low-volume applications. It processes **up to 38 forms per minute**, and handles **forms up to 14” long** in a **variety of fold types**. **Proudly built in the USA** with proven Formax technology, the FD 1202 is an economical solution with the quality and reliability you can depend upon.



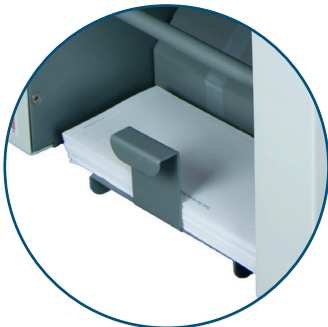
Simple Ergonomic Controls
Easy to use start and stop buttons



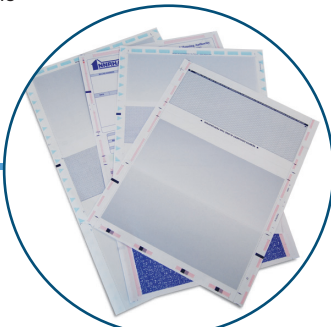
Drop-In Feeding System
Top loading infeed hopper holds up to 160 forms



Clearly Marked Fold Plates
Marked with five of the most popular folds



Adjustable Catch Tray
Provides neat, sequential stacking of processed forms



Compatible with Various Forms & Folds
Forms up to 14” long, in Z, C, Uneven Z, Uneven C, Half & Custom folds

STANDARD FEATURES

- Drop-in feed system
- Compact desktop design
- Handles forms up to 14” long
- Pre-marked for 5 popular folds
- Z, C, uneven Z, uneven C, half, and custom folds
- Adjustable catch tray
- Simple controls
- Processes up to 38 forms per minute
- Proudly made in the USA

OPTIONS

- Locking cabinet with casters
- 402 Series Jogger

SPECIFICATIONS

Hopper Capacity	Up to 160 forms 20#
Fixed Speed	Up to 38 forms per minute
Paper Size	Up to 8.5” W x 14” L (216 x 356mm)
Volume	Low volume
Power	FD Model: 120 Volts AC 50/60Hz FE Model: 220 Volts AC 50/60Hz
Dimensions	11.6” L x 14” W x 14.5” H (294 x 356 x 368mm)
Weight	55 lbs (25kg)
Safety Certifications	UL, CE
Made in the USA	