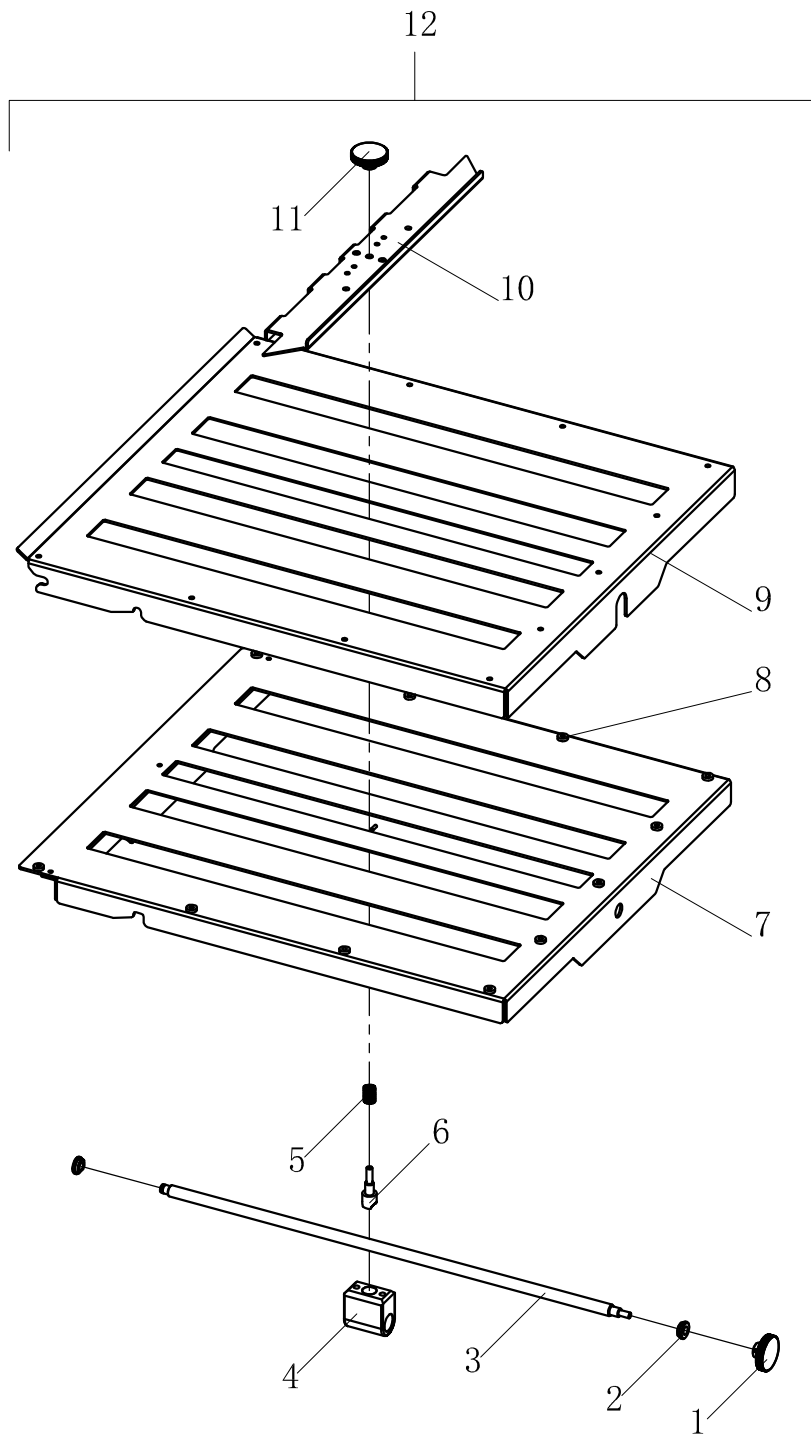


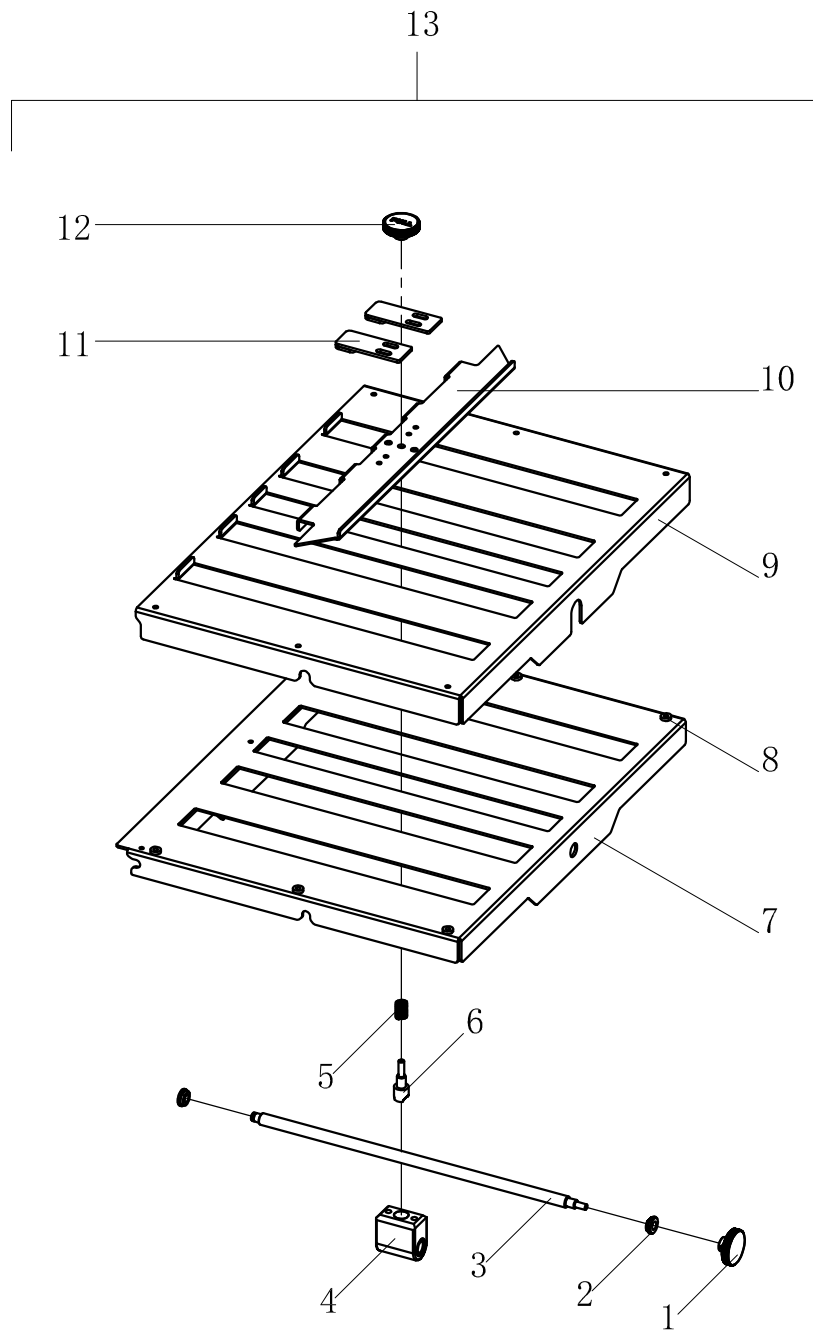
FORMAX[®]

FD 324
Tabletop Paper Folder

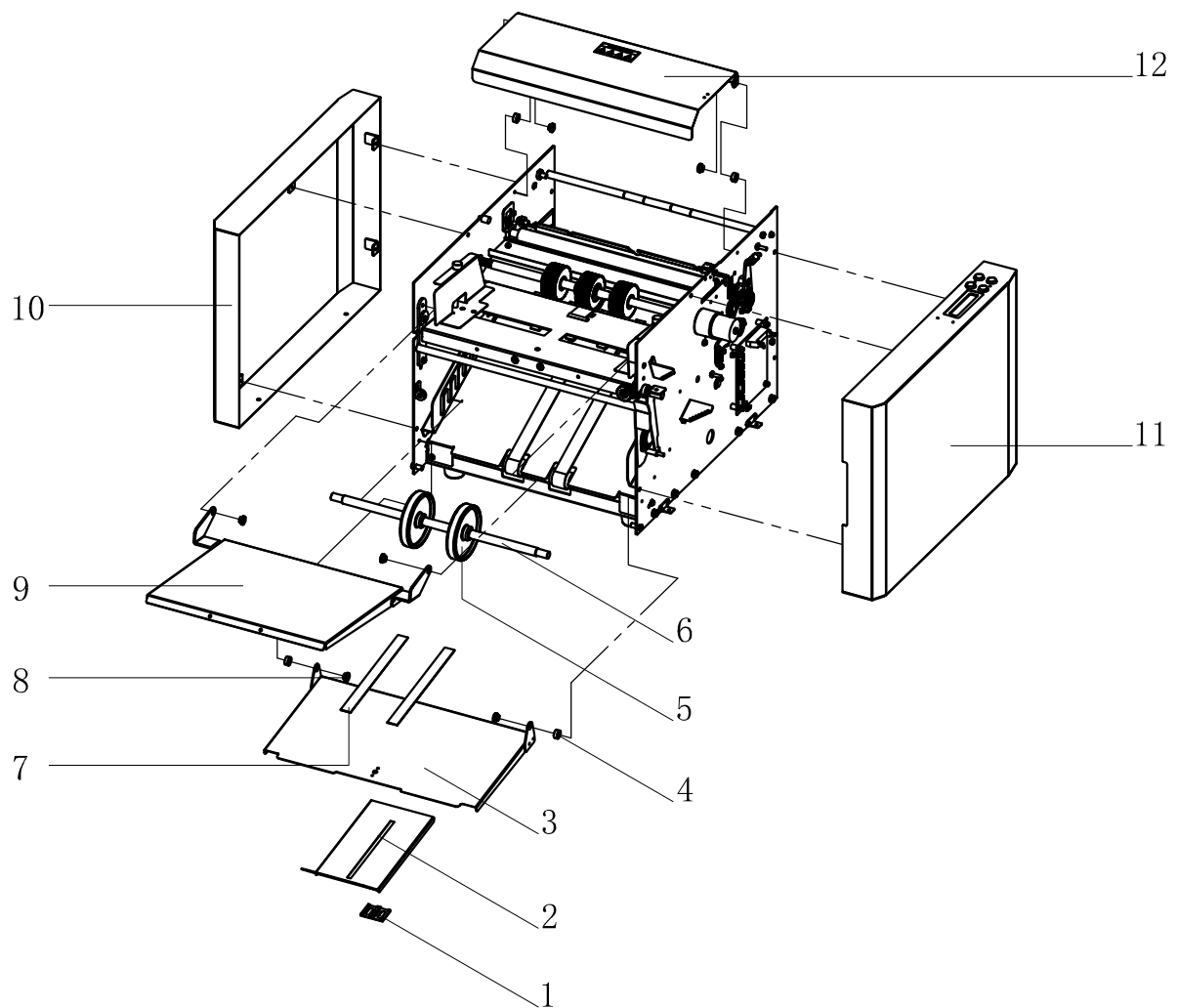
PARTS MANUAL
FIRST EDITION



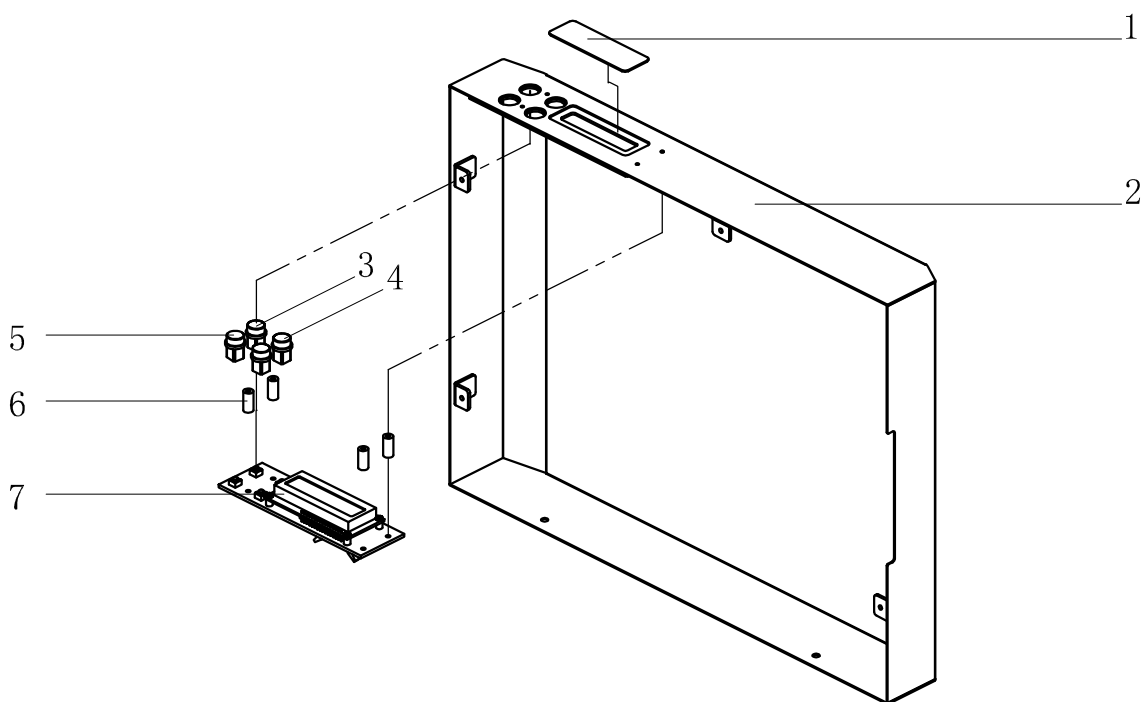
| INDEX | PARTS NO. | DESCRIPTION | QTY |
|-------|------------|---------------------------|-----|
| 1 | 03-50070g1 | Micro adjust knob | 1 |
| 2 | 03-80050 | Bushing | 2 |
| 3 | 03-20190 | First screw shaft | 1 |
| 4 | 03-70030 | Slider assembly | 1 |
| 5 | 03-D0050 | Spring | 1 |
| 6 | 03-G0011 | Nut support | 1 |
| 7 | 03-60073 | Welding plate | 1 |
| 8 | 3.2-7.2-2 | Plastic pad | 11 |
| 9 | 03-10353 | Fold plate upper cover | 1 |
| 10 | 03-10367 | Paper block | 1 |
| 11 | 03-50070g2 | Pull adjustment knob | 1 |
| 12 | 03-00016 | Upper fold plate assembly | 1 |



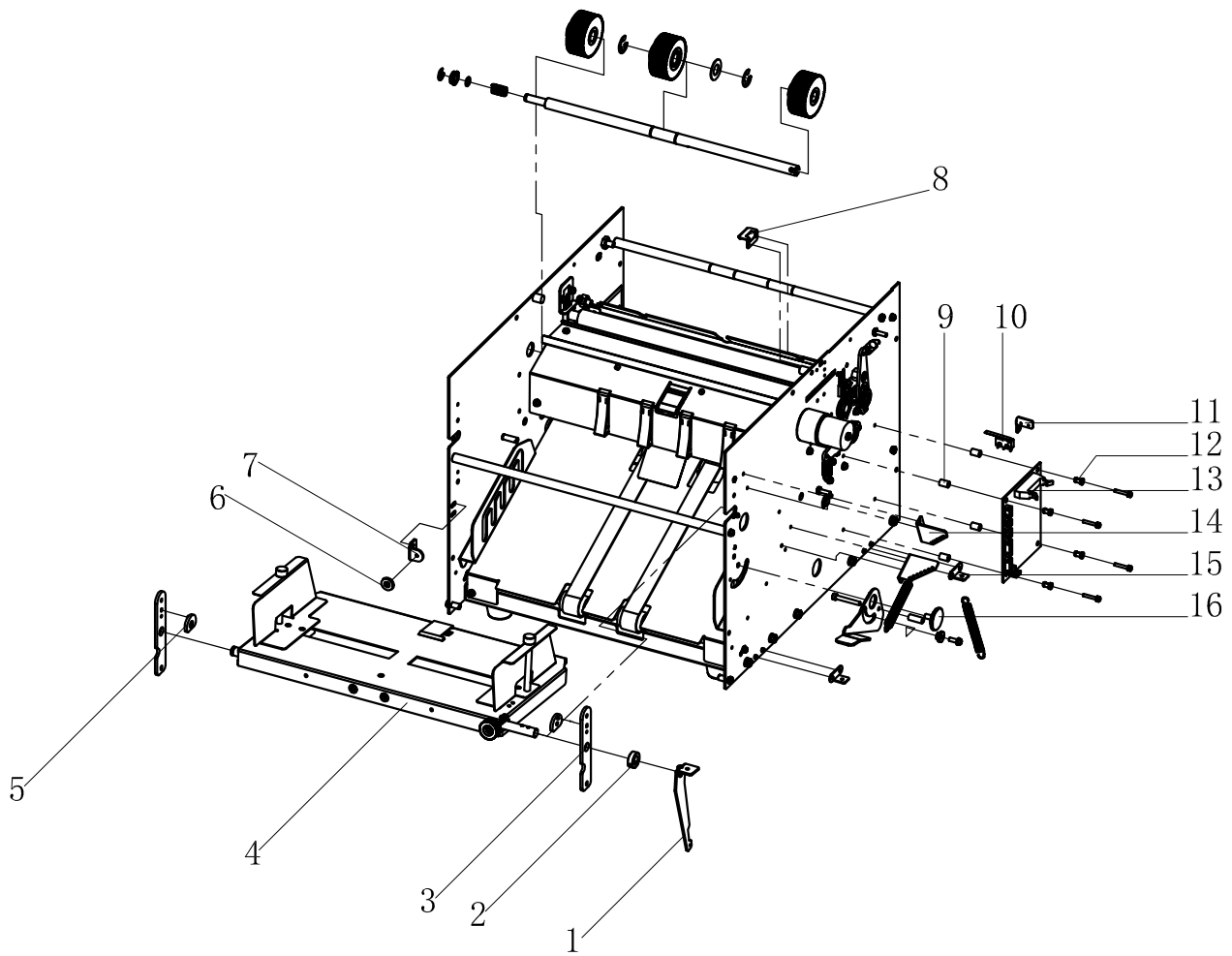
| INDEX | PARTS NO. | DESCRIPTION | QTY |
|-------|-------------|---------------------------|-----|
| 1 | 03-50070g1 | Micro adjust knob | 1 |
| 2 | 03-80050 | Bushing | 2 |
| 3 | 03-20230 | Second screw shaft | 1 |
| 4 | 03-70030 | Slider assembly | 1 |
| 5 | 03-D0050 | Spring | 1 |
| 6 | 03-G0011 | Nut support | 1 |
| 7 | 03-60084 | Welding plate | 1 |
| 8 | 3. 2-7. 2-2 | Plastic gasket | 6 |
| 9 | 03-10396 | Fold plate upper cover | 1 |
| 10 | 03-10367 | Paper block | 1 |
| 11 | 03-60150 | Half fold support plate | 2 |
| 12 | 03-50070g2 | Pull adjustment knob | 1 |
| 13 | 03-00026 | Lower fold plate assembly | 1 |



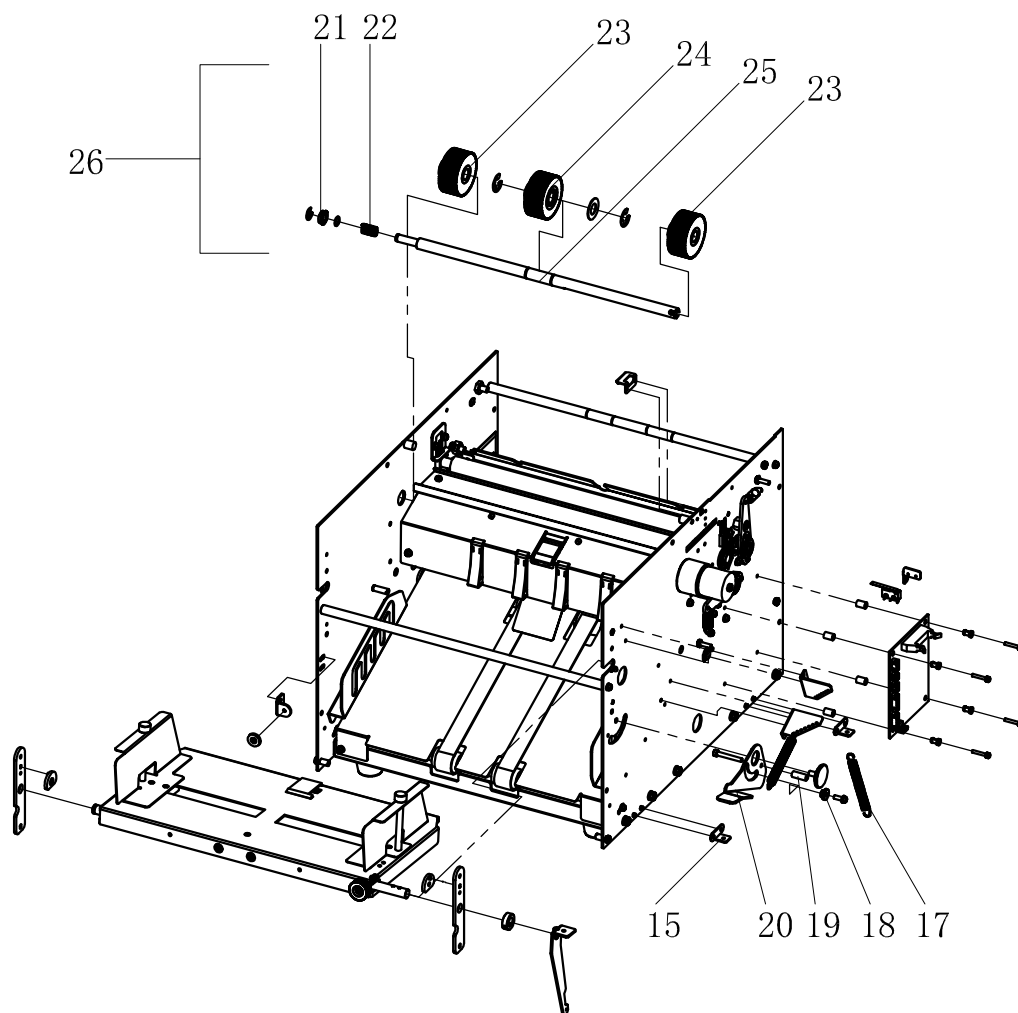
| INDEX | PARTS NO. | DESCRIPTION | QTY |
|-------|-----------|------------------------|-----|
| 1 | 03-30080 | Guide plate | 1 |
| 2 | 03-10620 | Outfeed tray extension | 1 |
| 3 | 03-60041 | Outfeed tray | 1 |
| 4 | 03-80080 | Gasket | 4 |
| 5 | 03-30050 | Press roller | 2 |
| 6 | 03-20490 | Press roller shaft | 1 |
| 7 | 03-A0080 | Paper guide | 2 |
| 8 | 03-80070 | Bushing | 6 |
| 9 | 03-60031 | Infeed tray extension | 1 |
| 10 | 03-60103 | Back cover assembly | 1 |
| 11 | 03-00061 | Front cover assembly | 1 |
| 12 | 03-14170 | Top cover | 1 |



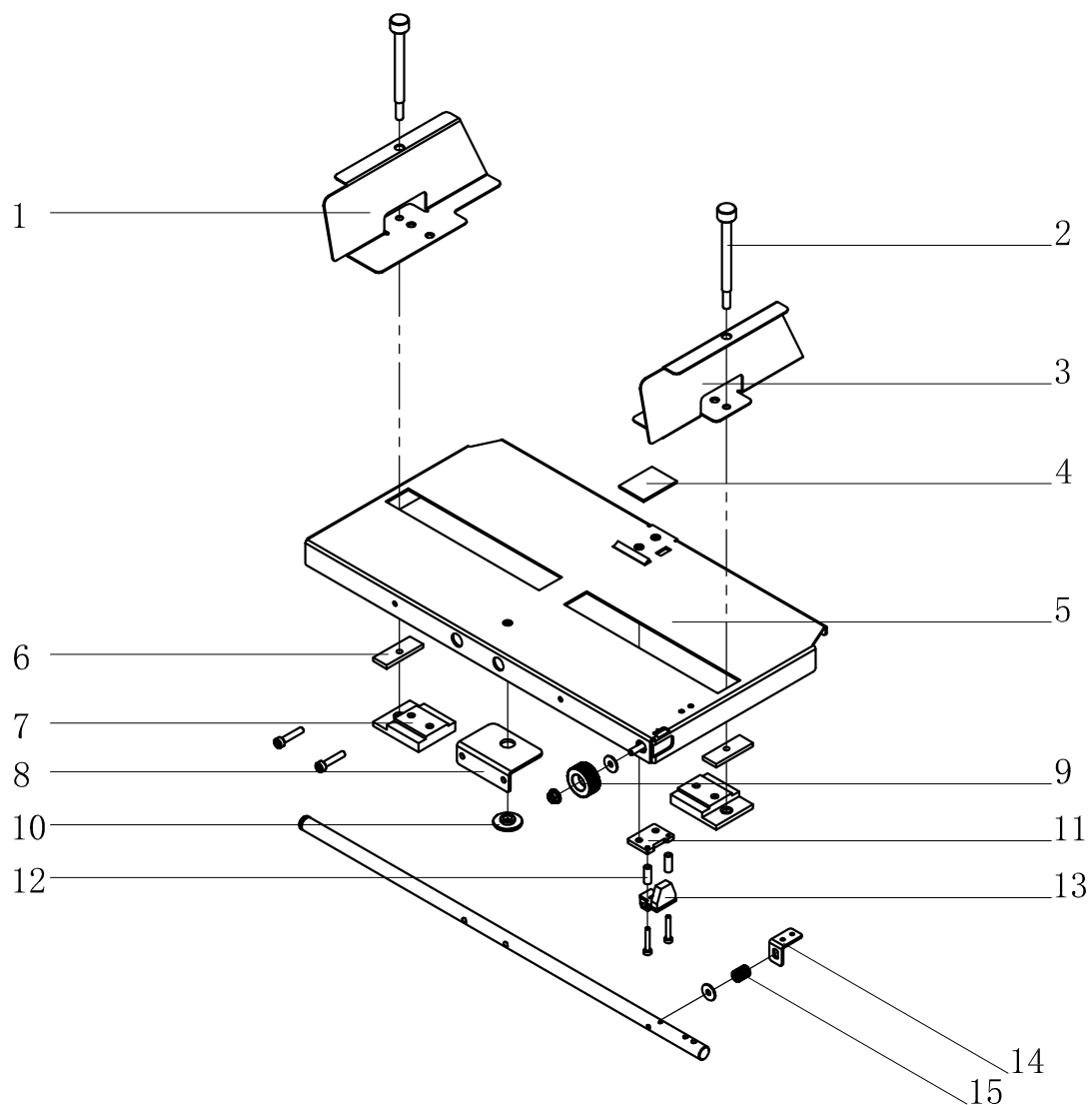
| INDEX | PARTS NO. | DESCRIPTION | QTY |
|-------|-----------|---------------------------|-----|
| 1 | 03-A0101 | Control panel clear cover | 1 |
| 2 | 03-60091 | Operator side cover | 1 |
| 3 | 03-30110 | Red button | 1 |
| 4 | 03-30100 | Green button | 1 |
| 5 | 03-30120 | Grey button | 2 |
| 6 | 3-7-15 | Spacer pillar | 4 |
| 7 | 03-B0100 | Control panel PCB unit | 1 |
| | | | |



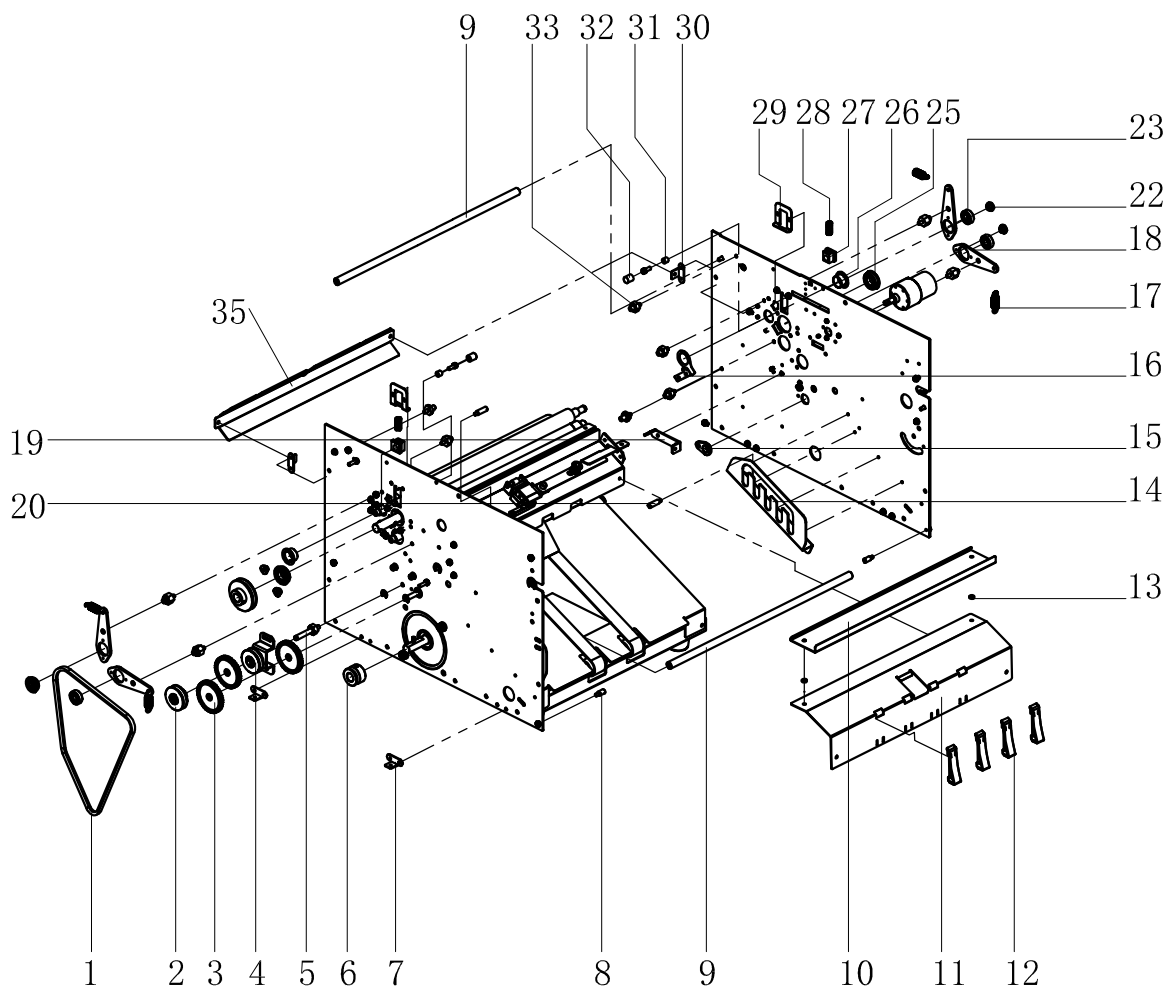
| INDEX | PARTS NO. | DESCRIPTION | QTY |
|-------|-----------|------------------------------|-----|
| 1 | 03-10A11 | Spring support rod | 1 |
| 2 | 03-20290 | Bushing | 1 |
| 3 | 03-10490 | Support plate | 2 |
| 4 | 03-00035 | Feed plate assembly | 1 |
| 5 | 03-30070 | Limit block | 2 |
| 6 | 01-A0051 | Magnet | 1 |
| 7 | 03-10A30 | Magnet support | 1 |
| 8 | 01-10480 | Inching switch protect cover | 1 |
| 9 | 4-7-11 | Spacer pillar | 4 |
| 10 | 11-B0020 | Inching switch | 1 |
| 11 | 01-10470 | Switch support | 1 |
| 12 | 4-7-2 | Spacer pillar | 4 |
| 13 | 03-B0121 | Control PC Board | 1 |
| 14 | 03-10A01 | Spring support rod | 2 |
| 15 | 03-10530 | Support rod | 2 |
| 16 | 03-20480 | Shaft nail | 1 |



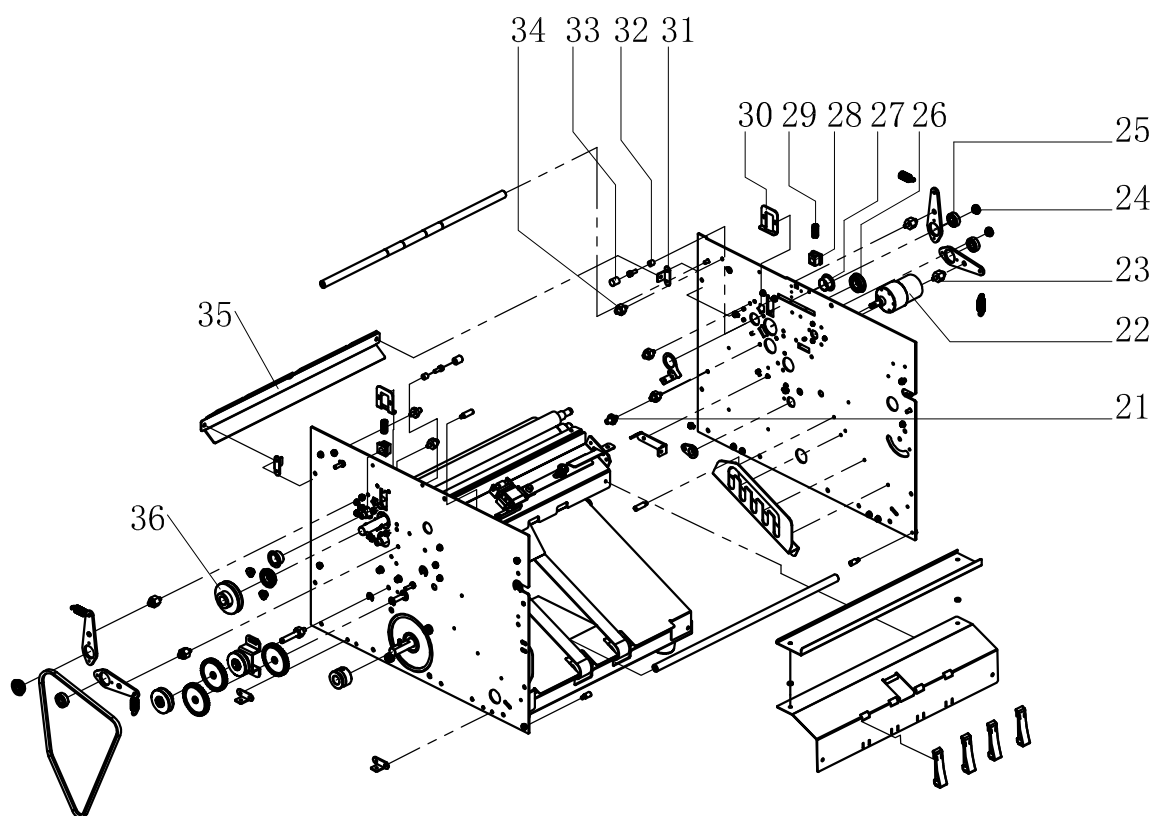
| INDEX | PARTS NO. | DESCRIPTION | QTY |
|-------|-----------|-----------------------|-----|
| 17 | 03-D0090 | Spring | 2 |
| 18 | 03-80070 | Bushing | 1 |
| 19 | 4-7-17 | Spacer pillar | 1 |
| 20 | 03-10A20 | Lever | 1 |
| 21 | MF168 | Bearing | 1 |
| 22 | 03-D0030 | Spring | 1 |
| 23 | 03-50060 | Auxiliary feed roller | 1 |
| 24 | 03-50050 | Main feed roller | 1 |
| 25 | 03-20051 | Feed roller shaft | 1 |
| 26 | 03-00080 | Feed roller assembly | 1 |



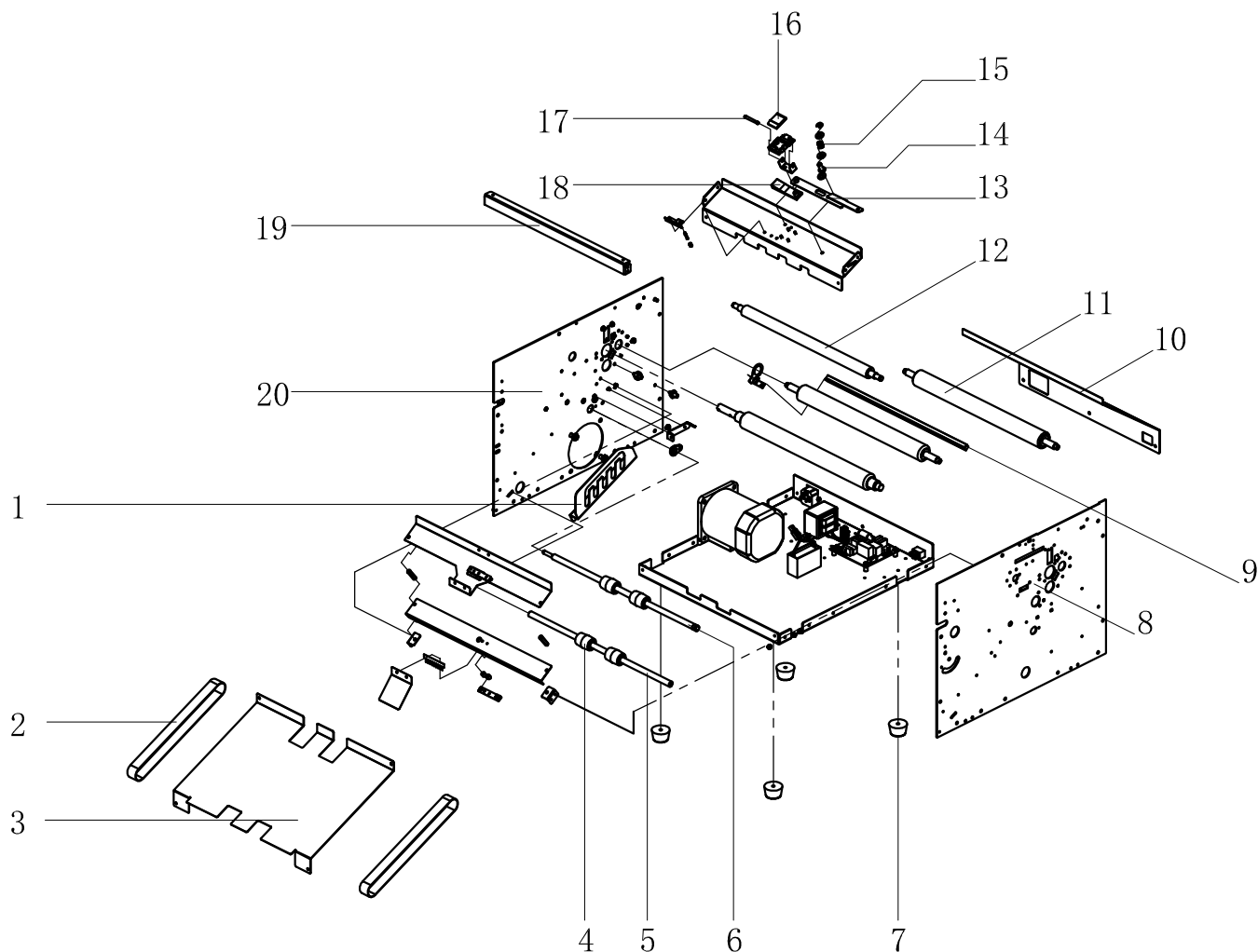
| INDEX | PARTS NO. | DESCRIPTION | QTY |
|-------|-----------|-----------------------------|-----|
| 1 | 03-10443 | Paper guide left | 1 |
| 2 | 03-20461 | Paper guide fix screw | 2 |
| 3 | 03-10423 | Paper guide right | 1 |
| 4 | 03-A0120 | Friction pad | 1 |
| 5 | 03-10456 | Paper feed table | 1 |
| 6 | 03-20490 | Fix plate | 2 |
| 7 | 03-20470 | Paper guide fix plate | 2 |
| 8 | 03-10481 | Shaft support plate | 1 |
| 9 | 03-20030 | Adjust knob | 1 |
| 10 | 03-20250 | Washer | 1 |
| 11 | 03-10513 | Photoelectric support plate | 1 |
| 12 | 3-5-13 | Spacer pillar | 2 |
| 13 | 03-B0050 | Paper feed in sensor | 1 |
| 14 | 03-10502 | Position plate | 1 |
| 15 | 03-D0060 | Spring | 1 |



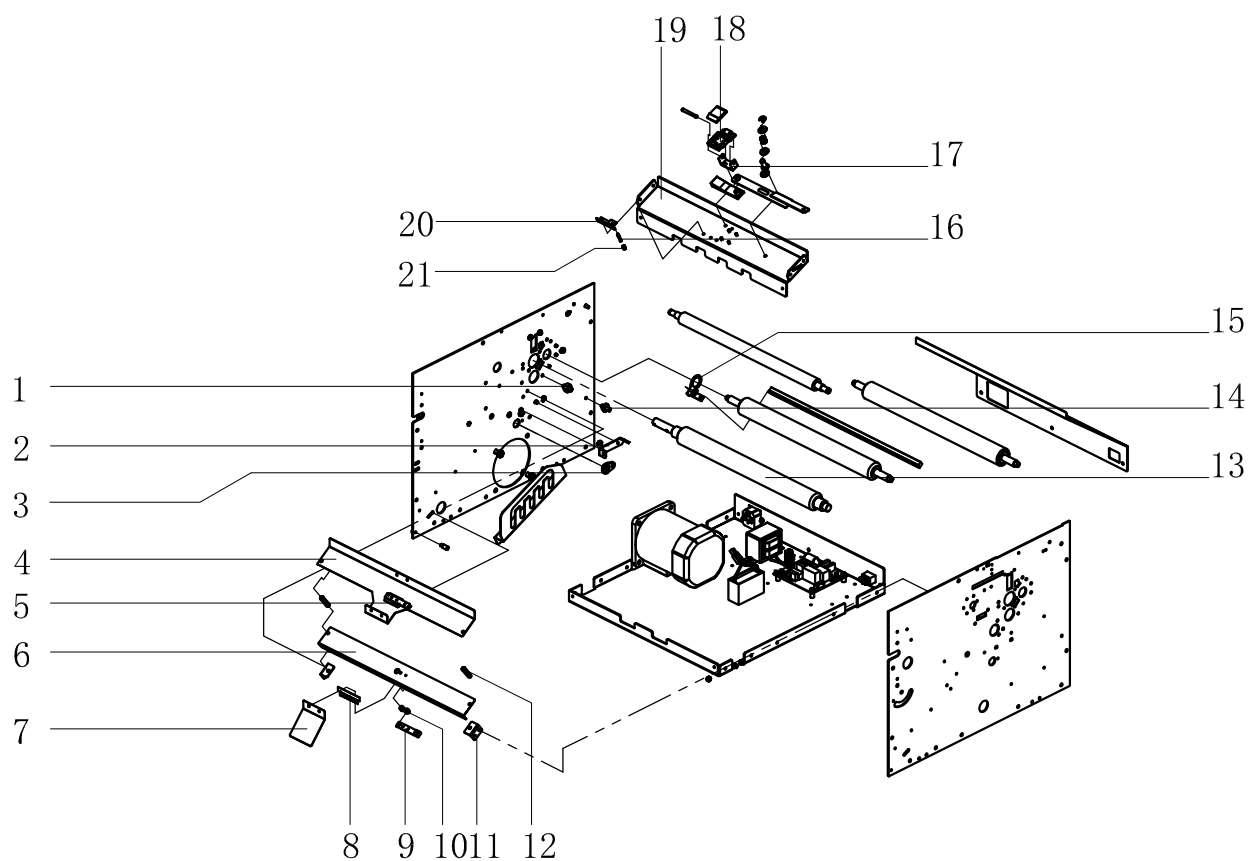
| INDEX | PARTS NO. | DESCRIPTION | QTY |
|-------|-----------|----------------------------|-----|
| 1 | 03-A0040 | V belt VC6*587 | 1 |
| 2 | 02-00020 | Paper fold pulley assembly | 1 |
| 3 | 03-30060 | Paper delivery gear | 3 |
| 4 | 03-00090 | Tensioner assembly | 1 |
| 5 | 03-20130 | Support pillar | 1 |
| 6 | 03-20170 | Motor pulley | 1 |
| 7 | 03-10530 | Support rod | 2 |
| 8 | 03-20350 | Shaft nail | 6 |
| 9 | 03-20320 | Support shaft | 2 |
| 10 | 03-10214 | Paper feed upper guide | 1 |
| 11 | 03-10204 | Paper feed lower guide | 1 |
| 12 | 03-30030 | Plastic paper guide | 4 |
| 13 | 4-7-2 | Spacer pillar | 2 |
| 14 | 03-10A90 | Guide shaft right groove | 1 |
| 15 | 03-80020 | Bushing | 1 |
| 16 | 03-10A40 | Right shaft support plate | 1 |
| 17 | 03-D0040 | Spring | 4 |
| 18 | 03-10060 | Fold roller support | 4 |
| 19 | 03-10770 | Right support plate | 1 |
| 20 | 03-20310 | Right support plate | 1 |



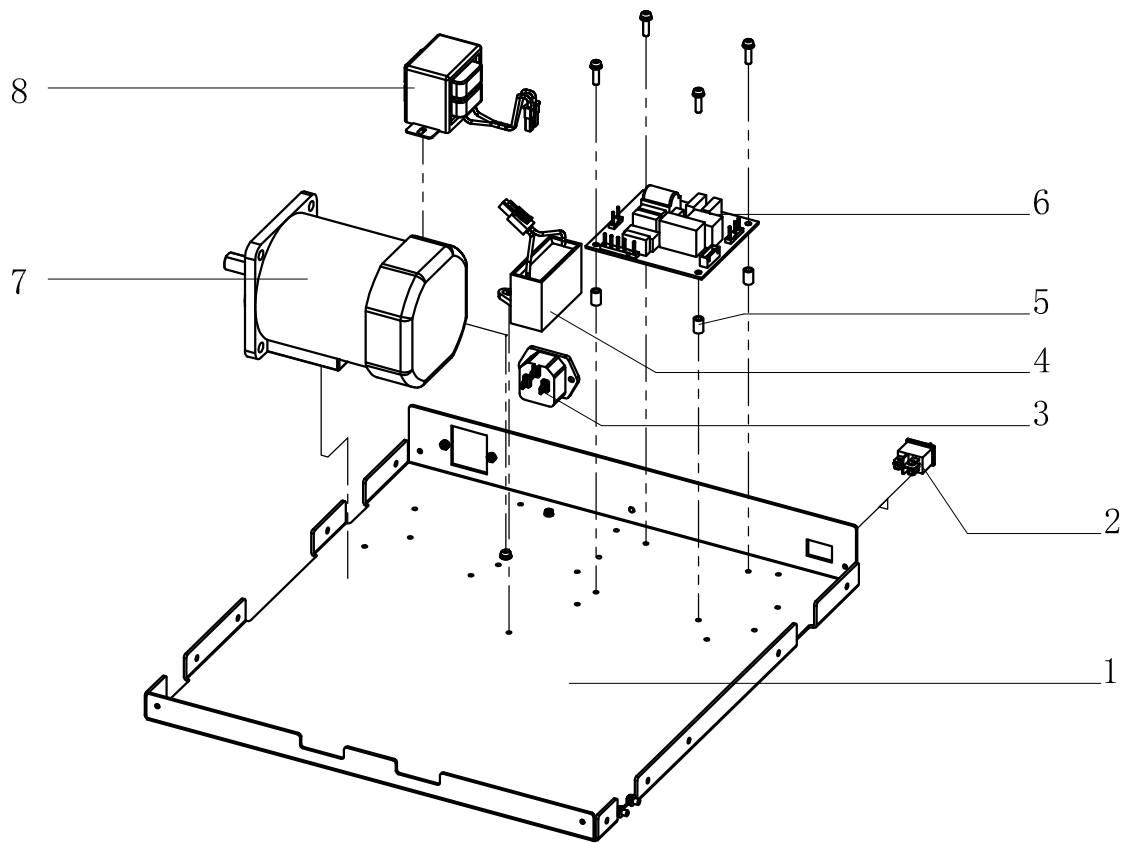
| INDEX | PARTS NO. | DESCRIPTION | QTY |
|-------|-----------|----------------------|-----|
| 21 | 03-20220 | Support pillar | 2 |
| 22 | 03-B0041 | Feeding motor | 1 |
| 23 | 03-20011 | Support pillar | 4 |
| 24 | 03-80070 | Bushing | 4 |
| 25 | F698 | Flange bearing F698 | 4 |
| 26 | F6901 | Flange bearing F6901 | 2 |
| 27 | SF-1F1510 | bushing | 2 |
| 28 | 03-80010 | Slider support plate | 2 |
| 29 | 03-D0010 | Spring | 2 |
| 30 | 03-10560 | Limit plate | 2 |
| 31 | 03-10530 | Support rod | 2 |
| 32 | 4-7-6 | Spacer pillar | 2 |
| 33 | 03-40020 | Rubber sleeve | 2 |
| 34 | 03-20160 | Support pillar | 6 |
| 35 | 03-10540 | Protect plate | 1 |
| 36 | 03-20180 | Belt driven gear | 1 |



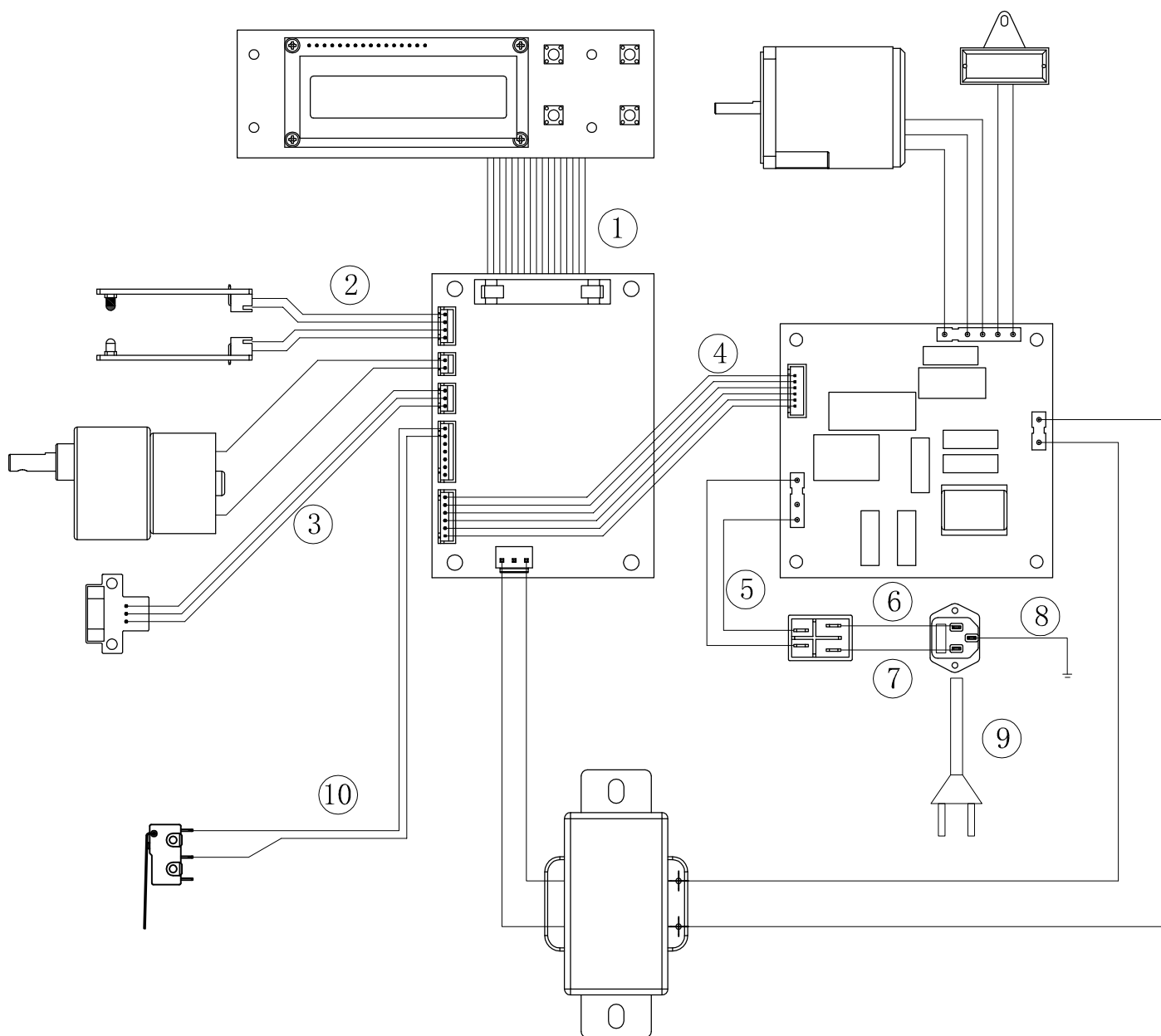
| INDEX | PARTS NO. | DESCRIPTION | QTY |
|-------|-----------|----------------------------|-----|
| 1 | 03-10A80 | Left guide paper groove | 1 |
| 2 | 03-A0030 | Belt 495x20 | 2 |
| 3 | 03-10220 | Outfeed guide plate | 1 |
| 4 | 03-30040 | Belt driven roller | 4 |
| 5 | 03-20080 | Outfeed auxiliary shaft | 1 |
| 6 | 03-20070 | Outfeed main shaft | 1 |
| 7 | 03-40010 | Base support | 4 |
| 8 | 03-10014 | Right support plate | 1 |
| 9 | 03-20480 | Shaft | 1 |
| 10 | 03-10552 | Fold roller protect plate | 1 |
| 11 | 03-50030 | Second fold roller | 2 |
| 12 | 03-50040 | Paper delivery fold roller | 1 |
| 13 | 03-10682 | Rod | 1 |
| 14 | 03-20360 | Shaft nail | 1 |
| 15 | 03-D0070 | Spring | 1 |
| 16 | 03-30020g | Paper separation plate | 1 |
| 17 | 03-20030 | Shaft | 1 |
| 18 | 03-30090 | Plate | 1 |
| 19 | 03-10193 | Support rod | 1 |
| 20 | 03-10024 | Left support plate | 1 |



| INDEX | PARTS NO. | DESCRIPTION | QTY |
|-------|-----------|----------------------------------|-----|
| 1 | 03-20160 | Support pillar | 6 |
| 2 | 03-10760 | Left support rod | 1 |
| 3 | 03-80020 | Bushing | 2 |
| 4 | 03-60120 | Outfeed guide welding up plate | 1 |
| 5 | 03-B0030 | PCB receiver | 1 |
| 6 | 03-60110 | Outfeed guide welding down plate | 1 |
| 7 | 03-10141 | Guide plate | 1 |
| 8 | 03-A0010 | Static electric brush | 1 |
| 9 | 03-B0020 | PCB Emitter | 1 |
| 10 | 3*7*6 | Spacer pillar | 4 |
| 11 | 03-10090 | Support plate | 2 |
| 12 | 4*7*25 | Spacer pillar | 2 |
| 13 | 03-50010 | Main fold roller | 1 |
| 14 | 03-20220 | Support pillar | 2 |
| 15 | 03-10A50 | Left shaft suppoer | 1 |
| 16 | 03-20041 | Top shaft | 1 |
| 17 | 03-10161 | Paper separator support | 1 |
| 18 | 03-30010 | Paper separator plate | 1 |
| 19 | 03-10152 | Paper separator support | 1 |
| 20 | 03-10170 | Guide plate | 1 |
| 21 | 03-D0020 | Spring | 1 |



| INDEX | PARTS NO. | DESCRIPTION | QTY |
|-------|-----------|-------------------|-----|
| 1 | 03-10752 | Base plate | 1 |
| 2 | 03-B0170 | Power switch | 1 |
| 3 | 03-B0180 | Inlet | 1 |
| 4 | 20uF | Electric capacity | 1 |
| 5 | 4-7-11 | Spacer pillar | 4 |
| 6 | 03-B0130 | Power PC Board | 1 |
| 7 | 03-B0010 | Motor 60W | 2 |
| 8 | 03-B0142 | Transformer | 1 |



| INDEX | PARTS NO. | DESCRIPTION | QTY |
|-------|-----------|----------------------------|-----|
| 1 | 01-N0010 | 20P Wire | 1 |
| 2 | 01-N0020 | Paper out sensor wire | 1 |
| 3 | 01-N0030 | Paper feed in sensor wire | 1 |
| 4 | 01-N0040 | 6P data wire | 1 |
| 5 | 01-N0050 | Power connection wire | 1 |
| 6 | 01-N0060 | Live wire | 1 |
| 7 | 01-N0070 | Zero wire | 1 |
| 8 | 01-N0080 | Ground wire | 1 |
| 9 | 01-N0090 | Power cord | 1 |
| 10 | 01-N0100 | Top cover open sensor wire | 1 |